

Recombinant Human TUBB Protein, His-tagged

Cat. No. TUBB-3923H Lot. No. (See product label)

SPECIFICATION

Product Overview	Recombinant Human TUBB(Val170~Val419) fused with His tag at N-terminal was expressed in E. coli.
Species	Human
Source	E.coli
ProteinLength	Val170~Val419
Description	This gene encodes a beta tubulin protein. This protein forms a dimer with alpha tubulin and acts as a structural component of microtubules. Mutations in this gene cause cortical dysplasia, complex, with other brain malformations 6. Alternative splicing results in multiple splice variants. There are multiple pseudogenes for this gene on chromosomes 1, 6, 7, 8, 9, and 13.
Form	PBS, pH7.4, containing 0.01% SKL, 1mM DTT, 5% Trehalose and Proclin300.
Molecular Mass	32.2kDa
Endotoxin	<1.0EU per 1ug (determined by the LAL method)
Purity	> 95%
Applications	Positive Control; Immunogen; SDS-PAGE; WB. If bio-activity of the protein is needed, please check active protein

 Tel: 1-631-559-9269 1-516-512-3133

 Email: info@creative-biomart.com  Fax: 1-631-938-8127

 45-1 Ramsey Road, Shirley, NY 11967, USA

Stability The thermal stability is described by the loss rate. The loss rate was determined by accelerated thermal degradation test, that is, incubate the protein at 37 centigrade for 48h, and no obvious degradation and precipitation were observed. The loss rate is less than 5% within the expiration date under appropriate storage condition.

Storage Avoid repeated freeze/thaw cycles. Store at 2-8 centigrade for one month. Aliquot and store at -80 centigrade for 12 months.

Reconstitution Reconstitute in PBS or others.

GENE INFORMATION

Gene Name [TUBB tubulin, beta class I \[Homo sapiens \]](#)

Official Symbol [TUBB](#)

Synonyms TUBB; tubulin, beta class I; tubulin, beta , tubulin, beta polypeptide; tubulin beta chain; beta1 tubulin; class I beta tubulin; M40; MGC16435; OK/SW cl.56; Tubb5; beta1-tubulin; beta 5-tubulin; beta-4 tubulin; beta Ib tubulin; class I beta-tubulin; tubulin beta-1 chain; tubulin beta-5 chain; tubulin beta polypeptide; tubulin, beta polypeptide; TUBB1; TUBB5; OK/SW-cl.56; MGC117247;

Gene ID [203068](#)

mRNA Refseq [NM_178014](#)

Protein Refseq [NP_821133](#)

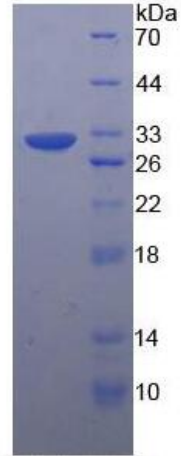
MIM [191130](#)

UniProt ID [P07437](#)

 Tel: 1-631-559-9269 1-516-512-3133

 Email: info@creative-biomart.com  Fax: 1-631-938-8127

 45-1 Ramsey Road, Shirley, NY 11967, USA



15% SDS-PAGE

 Tel: 1-631-559-9269 1-516-512-3133

 Email: info@creative-biomart.com  Fax: 1-631-938-8127

 45-1 Ramsey Road, Shirley, NY 11967, USA