

# Active Recombinant Full Length Human TUBB3 Protein, C-Flag-tagged

**Cat. No.** TUBB3-203HFL    **Lot. No.** (See product label)

## SPECIFICATION

<b>Product Overview</b>	Recombinant Full Length Human TUBB3 Protein, fused to Flag-tag at C-terminus, was expressed in Mammalian cells.
<b>Species</b>	Human
<b>Source</b>	Mammalian Cells
<b>Description</b>	This gene encodes a class III member of the beta tubulin protein family. Beta tubulins are one of two core protein families (alpha and beta tubulins) that heterodimerize and assemble to form microtubules. This protein is primarily expressed in neurons and may be involved in neurogenesis and axon guidance and maintenance. Mutations in this gene are the cause of congenital fibrosis of the extraocular muscles type 3. Alternate splicing results in multiple transcript variants. A pseudogene of this gene is found on chromosome 6.
<b>Form</b>	25 mM Tris HCl, pH 7.3, 100 mM glycine, 10% glycerol.
<b>Bio-activity</b>	Co-immunoprecipitation
<b>Molecular Mass</b>	50.3 kDa
<b>AA Sequence</b>	MREIVHIQAGQCQGNQIGAKFWEVISDEHGIDPSGNYVGDSLQLERISVYYNEASSH KYVPRAILVDLEP GTMDSVRSFAGFHLFRPDNFIFGQSGAGNNWAKGHYTEGAEL VDSVLDVVRKECENCDCCLQGFLTHSLG GGTGSGMGTLISKVREEYPDRIMNTFS

 Tel: 1-631-559-9269    1-516-512-3133

 Email: [info@creative-biomart.com](mailto:info@creative-biomart.com)     Fax: 1-631-938-8127

 45-1 Ramsey Road, Shirley, NY 11967, USA

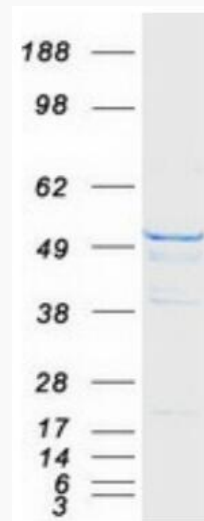
VVPSPKVS DTVVEPYNATLSIHQLVENTDETYCIDNEALYDI CFRTLKLATPTYGDLN  
 HLVSATMSGVTTSLRFPGQLNADLRKLAVNMVFPRLHFFMPGFAPLTARGSQQ Y  
 RALTVPELTQQMFDANKMMAACDPRHGRYLTVATVFRGRMSMKEVDEQMLAIQSK  
 NSSYFVEWIPNNVK VAVCDIPPRGLKMSSTFIGNSTAIQELFKRISEQFTAMFRRKAF  
 LHWYTGEGMDEMEFTEAESNMNDLVS  
 EYQQYQDATAEEEGEMYEDDEEESEAQGPKTRTRPLEQKLISEEDLAANDILDYKD  
 DDDKV

<b>Purity</b>	> 80% as determined by SDS-PAGE and Coomassie blue staining.
<b>Stability</b>	Stable for 12 months from the date of receipt of the product under proper storage and handling conditions. Avoid repeated freeze-thaw cycles.
<b>Storage</b>	Store at -80 centigrade.
<b>Concentration</b>	>50 ug/mL as determined by microplate BCA method.
<b>Preparation</b>	Recombinant protein was captured through anti-DDK affinity column followed by conventional chromatography steps.
<b>Protein Families</b>	Druggable Genome, ES Cell Differentiation/IPS
<b>Protein Pathways</b>	Gap junction, Pathogenic Escherichia coli infection
<b>Full Length</b>	Full L.

## GENE INFORMATION

<b>Gene Name</b>	TUBB3 tubulin beta 3 class III [ Homo sapiens (human) ]
<b>Official Symbol</b>	TUBB3

<b>Synonyms</b>	CDCBM; FEOM3; TUBB4; CDCBM1; CFEOM3; beta-4; CFEOM3A
<b>Gene ID</b>	10381
<b>mRNA Refseq</b>	NM_006086.4
<b>Protein Refseq</b>	NP_006077.2
<b>MIM</b>	602661
<b>UniProt ID</b>	Q13509



Coomassie blue staining of purified TUBB3 protein.

 Tel: 1-631-559-9269 1-516-512-3133

 Email: [info@creative-biomart.com](mailto:info@creative-biomart.com)  Fax: 1-631-938-8127

 45-1 Ramsey Road, Shirley, NY 11967, USA