

# Recombinant Human TUBB3 Protein, Myc/DDK-tagged, C13 and N15-labeled

Cat. No. TUBB3-5059H Lot. No. (See product label)

## SPECIFICATION

### Product Overview

TUBB3 MS Standard C13 and N15-labeled recombinant protein (NP\_006077) with a C-terminal MYC/DDK tag, was expressed in HEK293 cells.

### Species

Human

### Source

HEK293

### Description

This gene encodes a class III member of the beta tubulin protein family. Beta tubulins are one of two core protein families (alpha and beta tubulins) that heterodimerize and assemble to form microtubules. This protein is primarily expressed in neurons and may be involved in neurogenesis and axon guidance and maintenance. Mutations in this gene are the cause of congenital fibrosis of the extraocular muscles type 3. Alternate splicing results in multiple transcript variants. A pseudogene of this gene is found on chromosome 6.

### Molecular Mass

50.4 kDa

### AA Sequence

MREIVHIQAGQCQGNQIGAKFWEVISDEHGIDPSGNYVGDSLQLERISVYYNEASSH  
 KYVPRAILVDLEPGTMDSVRSGAFGHLFRPDNFIGQSGAGNNWAKGHYTEGAELV  
 DSVLDVVRKECENCDCQLQGFQLTHSLGGGTGSGMGTLLISKVREEYPDRIMNTFSV  
 VPSPKVSDTVVEPYNATLSIHLVENTDETYCIDNEALYDICFRTLKLATPTYGDLNHL  
 VSATMSGVTTSLRFPGQLNADLRKLAVNMPFPRLLHFFMPGFAPLTARGSQQYRAL  
 TVPELTQQMFDKNNMAACDPRHGRYLTVATVFRGRMSMKEVDEQMLAIQSKNSS

 Tel: 1-631-559-9269 1-516-512-3133

 Email: [info@creative-biomart.com](mailto:info@creative-biomart.com)  Fax: 1-631-938-8127

 45-1 Ramsey Road, Shirley, NY 11967, USA

YFVEWIPNNVKVAVCDIPPRGLKMSSTFIGNSTAIQELFKRISEQFTAMFRRKAFLHW  
 YTGEGMDEMEFTEAESNMNDLVSEYQQYQDATAEEEGEMYEDDEEESEAQGPKT  
 RTRPLEQKLISEEDLAANDILDYKDDDDKV

**Purity** > 80% as determined by SDS-PAGE and Coomassie blue staining

**Stability** Stable for 3 months from receipt of products under proper storage and handling conditions.

**Storage** Store at -80 centigrade. Avoid repeated freeze-thaw cycles.

**Concentration** 50 µg/mL as determined by BCA

**Storage Buffer** 100 mM glycine, 25 mM Tris-HCl, pH 7.3.

## GENE INFORMATION

**Gene Name** TUBB3 tubulin beta 3 class III [ Homo sapiens (human) ]

**Official Symbol** TUBB3

**Synonyms** TUBB3; tubulin, beta 3 class III; tubulin, beta 3; tubulin beta-3 chain; beta 4; class III beta tubulin; tubulin beta-III; tubulin beta-4 chain; class III beta-tubulin; CDCBM; TUBB4; beta-4; CFEOM3A;

**Gene ID** 10381

**mRNA Refseq** NM\_006086

**Protein Refseq** NP\_006077

 Tel: 1-631-559-9269 1-516-512-3133

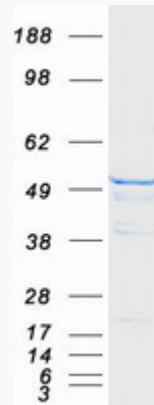
 Email: [info@creative-biomart.com](mailto:info@creative-biomart.com)  Fax: 1-631-938-8127

 45-1 Ramsey Road, Shirley, NY 11967, USA

MIM 602661

UniProt ID Q13509

SDS-PAGE



 Tel: 1-631-559-9269 1-516-512-3133

 Email: [info@creative-biomart.com](mailto:info@creative-biomart.com)  Fax: 1-631-938-8127

 45-1 Ramsey Road, Shirley, NY 11967, USA