

Recombinant Human TUBB3 Protein (Met1-Lys450), C-His tagged

Cat. No. TUBB3-5531H Lot. No. (See product label)

SPECIFICATION

Product Overview	Recombinant human TUBB3 (Met1-Lys450) fused with the C-His tag was expressed in E. coli.
Species	Human
Source	E.coli
ProteinLength	Met1-Lys450
Form	Lyophilized powder/frozen liquid
Molecular Mass	52.74 kDa
Purity	> 90 % as determined by SDS-PAGE
Notes	For research use only.
Storage	Use a manual defrost freezer and avoid repeated freeze thaw cycles. Store at 2 to 8 centigrade for one week. Store at -20 to -80 centigrade for twelve months from the date of receipt.
Storage Buffer	0.01M PBS, pH 7.4, 0.02 % NLS
Reconstitution	Reconstitute in sterile water for a stock solution.

 Tel: 1-631-559-9269 1-516-512-3133

 Email: info@creative-biomart.com  Fax: 1-631-938-8127

 45-1 Ramsey Road, Shirley, NY 11967, USA

Shipping

They are shipped out with dry ice/blue ice unless customers require otherwise.

GENE INFORMATION
Gene Name

TUBB3 tubulin, beta 3 class III [Homo sapiens (human)]

Official Symbol

TUBB3

Synonyms

TUBB3; tubulin, beta 3 class III; tubulin, beta 3; tubulin beta-3 chain; beta 4; class III beta tubulin; tubulin beta-III; tubulin beta-4 chain; class III beta-tubulin; CDCBM; TUBB4; beta-4; CFEOM3A;

Gene ID

10381

mRNA Refseq

NM_001197181

Protein Refseq

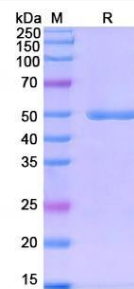
NP_001184110

MIM

602661

UniProt ID

Q13509

SDS-PAGE


 Tel: 1-631-559-9269 1-516-512-3133

 Email: info@creative-biomart.com  Fax: 1-631-938-8127

 45-1 Ramsey Road, Shirley, NY 11967, USA