

Recombinant Human TUFM Protein (44-452 aa), His-SUMO-tagged

Cat. No. TUFM-845H Lot. No. (See product label)

SPECIFICATION

Product Overview	Recombinant Human TUFM Protein (44-452 aa) is produced by E. coli expression system. This protein is fused with a 6xHis-SUMO tag at the N-terminal. Research Area: Metabolism. Protein Description: Full Length of Mature Protein.
Species	Human
Source	E.coli
ProteinLength	44-452 aa
Description	This protein promotes the GTP-dependent binding of aminoacyl-tRNA to the A-site of ribosomes during protein biosynthesis.
Form	Tris-based buffer, 50% glycerol
Molecular Mass	61.0 kDa
AA Sequence	<p>AVEAKKTYVRDKPHVNVGTIGHVDHGKTTLTAITKILAEGGGAKFKKYEEIDNAPEE RARGITINAAHVEYSTAARHYAHTDCPGHADYVKNMITGTAPLDGCILVVAANDGPM PQTREHLLLARQIGVEHVVVYVKNKADAVQDSEMVELVELEIRELLTEFGYKGEETPVI VGSALCALEGRDPELGLKSVQKLLDAVDTYIPVPARDLEKPFLLPVEAVYSVPGRGT VVTGTLERGILKKGDECELLGHSKNIRTVVTGIEMFHKSLERAEAGDNLGALVRGLK REDLRRGLVMVKPGSIKPHQKVEAQVYILSKEEGGRHKPFVSHFMPVMFSLTWDMA CRIILPPEKELAMPGEDLKFNLILRQPMILEKGQRFTLRDGNRTIGTGLVTNTLAMTEE</p>

Tel: 1-631-559-9269 1-516-512-3133

Email: info@creative-biomart.com Fax: 1-631-938-8127

45-1 Ramsey Road, Shirley, NY 11967, USA

	EKNIKWG
Purity	> 90% as determined by SDS-PAGE.
Notes	Repeated freezing and thawing is not recommended. Store working aliquots at 4 centigrade for up to one week.
Storage	The shelf life is related to many factors, storage state, buffer ingredients, storage temperature and the stability of the protein itself. Generally, the shelf life of liquid form is 6 months at -20 centigrade/-80 centigrade. The shelf life of lyophilized form is 12 months at -20 centigrade/-80 centigrade.
Concentration	A hardcopy of COA with concentration instruction is sent along with the products.

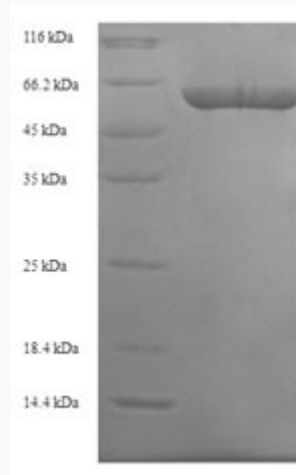
GENE INFORMATION

Gene Name	TUFM Tu translation elongation factor, mitochondrial [Homo sapiens]
Official Symbol	TUFM
Synonyms	TUFM; EF TuMT; EFTu; EFTU; EF-Tu; P43; COXPD4; EF-TuMT;
Gene ID	7284
mRNA Refseq	NM_003321
Protein Refseq	NP_003312
MIM	602389
UniProt ID	P49411

 Tel: 1-631-559-9269 1-516-512-3133

 Email: info@creative-biomart.com  Fax: 1-631-938-8127

 45-1 Ramsey Road, Shirley, NY 11967, USA



(Tris-Glycine gel) Discontinuous SDS-PAGE (reduced) with 5% enrichment gel and 15% separation gel.

 Tel: 1-631-559-9269 1-516-512-3133

 Email: info@creative-biomart.com  Fax: 1-631-938-8127

 45-1 Ramsey Road, Shirley, NY 11967, USA