

Recombinant Full Length Human TWIST1 Protein, C-Flag-tagged

Cat. No. TWIST1-2100HFL **Lot. No.** (See product label)

SPECIFICATION

| | |
|-------------------------|--|
| Product Overview | Recombinant Full Length Human TWIST1 Protein, fused to Flag-tag at C-terminus, was expressed in Mammalian cells. |
| Species | Human |
| Source | Mammalian Cells |
| Description | <p>This gene encodes a basic helix-loop-helix (bHLH) transcription factor that plays an important role in embryonic development. The encoded protein forms both homodimers and heterodimers that bind to DNA E box sequences and regulate the transcription of genes involved in cranial suture closure during skull development. This protein may also regulate neural tube closure, limb development and brown fat metabolism. This gene is hypermethylated and overexpressed in multiple human cancers, and the encoded protein promotes tumor cell invasion and metastasis, as well as metastatic recurrence. Mutations in this gene cause Saethre-Chotzen syndrome in human patients, which is characterized by craniosynostosis, ptosis and hypertelorism.</p> |
| Form | 25 mM Tris HCl, pH 7.3, 100 mM glycine, 10% glycerol. |
| Molecular Mass | 20.8 kDa |
| AA Sequence | MMQDVSSSPVSPADDLSLNSEEEPPDRQQPPSGKRGGRKRRSSRRSAGGGAGPG GAAGGGVGGGDEPGSP AQGKRGKKSAGCGGGGGAGGGGGSSSGGGSPQSYEE |

 Tel: 1-631-559-9269 1-516-512-3133

 Email: info@creative-biomart.com  Fax: 1-631-938-8127

 45-1 Ramsey Road, Shirley, NY 11967, USA



LQTQRVMANVRERQRTQSLNEAFAALRKIIPTL PSDKLSKIQTLKLAARYIDFLYQVL
QSELDKSKMASCSYVAHERLSYAFSVWRMEGAWSMSASH SGPTRTRPLEQKLISE
EDLAANDILDYKDDDDKV

Purity > 80% as determined by SDS-PAGE and Coomassie blue staining.

Stability Stable for 12 months from the date of receipt of the product under proper storage and handling conditions. Avoid repeated freeze-thaw cycles.

Storage Store at -80 centigrade.

Concentration >50 ug/mL as determined by microplate BCA method.

Preparation Recombinant protein was captured through anti-DDK affinity column followed by conventional chromatography steps.

Protein Families Druggable Genome

Full Length Full L.

GENE INFORMATION

Gene Name [TWIST1 twist family bHLH transcription factor 1 \[Homo sapiens \(human\) \]](#)

Official Symbol [TWIST1](#)

Synonyms CRS; CSO; SCS; ACS3; CRS1; BPES2; BPES3; SWCOS; TWIST; bHLHa38

Gene ID [7291](#)

mRNA Refseq [NM_000474.4](#)

Tel: 1-631-559-9269 1-516-512-3133

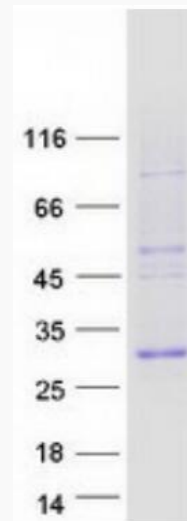
Email: info@creative-biomart.com Fax: 1-631-938-8127

45-1 Ramsey Road, Shirley, NY 11967, USA

Protein Refseq NP_000465.1

MIM 601622

UniProt ID Q15672



Coomassie blue staining of purified TWIST1 protein.

 Tel: 1-631-559-9269 1-516-512-3133

 Email: info@creative-biomart.com  Fax: 1-631-938-8127

 45-1 Ramsey Road, Shirley, NY 11967, USA