

Recombinant Human TWIST1 protein, His-tagged

Cat. No. TWIST1-2621H Lot. No. (See product label)

SPECIFICATION

Product Overview	Recombinant Human TWIST1 protein(12-72 aa), fused with N-terminal His tag, was expressed in E.coli.
Species	Human
Source	E.coli
ProteinLength	12-72 aa
Form	The purified protein was Lyophilized from sterile PBS (58mM Na ₂ HPO ₄ ,17mM NaH ₂ PO ₄ , 68mM NaCl, pH7.4). 5 % trehalose and 5 % mannitol are added as protectant before lyophilization. The elution buffer contain 300mM imidazole.
AASequence	PADDLSLNSEEEPPDRQQPPSGKRGGKRKRSSRRSAGGGAGPGGAAGGGVGGGD EPGSPAQG
Purity	85%, by SDS-PAGE with Coomassie Brilliant Blue staining.
Storage	Store at 2-8°C for 1-2 weeks. Aliquot and store at -20°C to -80°C for up to 3 months, reconstitution with sterile water and addition of an equal volume of glycerol. Avoid repeat freeze-thaw cycles.
Reconstitution	Dissolve the product in 200 µl sterile water to achieve a working concentration of 0.25 g/µl. If experimental compatibility allows, mix the aqueous solution with an equal volume of glycerol (1:1 ratio) after initial reconstitution.

 Tel: 1-631-559-9269 1-516-512-3133

 Email: info@creative-biomart.com  Fax: 1-631-938-8127

 45-1 Ramsey Road, Shirley, NY 11967, USA

GENE INFORMATION

Gene Name TWIST1 twist homolog 1 (Drosophila) [Homo sapiens]

Official Symbol TWIST1

Synonyms TWIST1; twist homolog 1 (Drosophila); acrocephalosyndactyly 3 , ACS3, blepharophimosis, epicanthus inversus and ptosis 3 , BPES3, TWIST; twist-related protein 1; bHLHa38; BPES2; H twist; Saethre Chotzen syndrome; SCS; H-twist; B-HLH DNA binding protein; TWIST homolog of drosophila; class A basic helix-loop-helix protein 38; ACS3; CRS1; BPES3; TWIST;

Gene ID 7291

mRNA Refseq NM_000474

Protein Refseq NP_000465

MIM 601622

UniProt ID Q15672

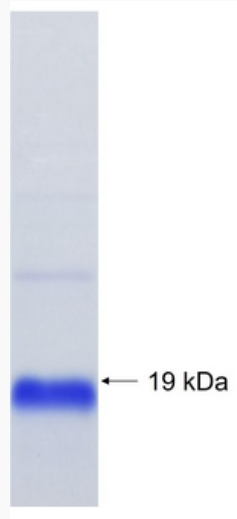
 Tel: 1-631-559-9269 1-516-512-3133

 Email: info@creative-biomart.com  Fax: 1-631-938-8127

 45-1 Ramsey Road, Shirley, NY 11967, USA



SDS-PAGE



Tel: 1-631-559-9269 1-516-512-3133

Email: info@creative-biomart.com Fax: 1-631-938-8127

45-1 Ramsey Road, Shirley, NY 11967, USA