

## Recombinant Human TWIST1 Protein (Met1-His202), N-His tagged

Cat. No. TWIST1-6522H Lot. No. (See product label)

### SPECIFICATION

<b>Product Overview</b>	Recombinant human TWIST1 (Met1-His202) fused with the N-His tag was expressed in E. coli.
<b>Species</b>	Human
<b>Source</b>	E.coli
<b>ProteinLength</b>	Met1-His202
<b>Form</b>	Lyophilized powder/frozen liquid
<b>Molecular Mass</b>	23.26 kDa
<b>Purity</b>	> 90 % as determined by SDS-PAGE
<b>Notes</b>	For research use only.
<b>Storage</b>	Use a manual defrost freezer and avoid repeated freeze thaw cycles. Store at 2 to 8 centigrade for one week. Store at -20 to -80 centigrade for twelve months from the date of receipt.
<b>Storage Buffer</b>	0.01M PBS, pH 7.4, 0.02 % NLS
<b>Reconstitution</b>	Reconstitute in sterile water for a stock solution.

 Tel: 1-631-559-9269 1-516-512-3133

 Email: [info@creative-biomart.com](mailto:info@creative-biomart.com)  Fax: 1-631-938-8127

 45-1 Ramsey Road, Shirley, NY 11967, USA

**Shipping** They are shipped out with dry ice/blue ice unless customers require otherwise.

## GENE INFORMATION

**Gene Name** TWIST1 twist homolog 1 (Drosophila) [ Homo sapiens (human) ]

**Official Symbol** TWIST1

**Synonyms** TWIST1; twist homolog 1 (Drosophila); acrocephalosyndactyly 3, ACS3, blepharophimosis, epicanthus inversus and ptosis 3, BPES3, TWIST; twist-related protein 1; bHLHa38; BPES2; H twist; Saethre Chotzen syndrome; SCS; H-twist; B-HLH DNA binding protein; TWIST homolog of drosophila; class A basic helix-loop-helix protein 38; ACS3; CRS1; BPES3; TWIST;

**Gene ID** 7291

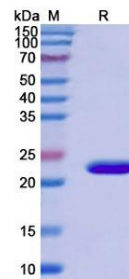
**mRNA Refseq** NM\_000474

**Protein Refseq** NP\_000465

**MIM** 601622

**UniProt ID** Q15672

## SDS-PAGE



 Tel: 1-631-559-9269 1-516-512-3133

 Email: [info@creative-biomart.com](mailto:info@creative-biomart.com)  Fax: 1-631-938-8127

 45-1 Ramsey Road, Shirley, NY 11967, USA