

# Recombinant Human TWIST2 Protein, Myc/DDK-tagged, C13 and N15-labeled

**Cat. No.** TWIST2-3420H    **Lot. No.** (See product label)

## SPECIFICATION

<b>Product Overview</b>	TWIST2 MS Standard C13 and N15-labeled recombinant protein (NP_476527) with a C-terminal MYC/DDK tag, was expressed in HEK293 cells.
<b>Species</b>	Human
<b>Source</b>	HEK293
<b>Description</b>	The protein encoded by this gene is a basic helix-loop-helix type transcription factor and shares similarity with Twist. This protein may inhibit osteoblast maturation and maintain cells in a preosteoblast phenotype during osteoblast development. This gene may be upregulated in certain cancers. Mutations in this gene cause focal facial dermal dysplasia 3, Setleis type. Two transcript variants encoding the same protein have been found.
<b>Molecular Mass</b>	18.1 kDa
<b>AA Sequence</b>	MEEGSSSPVSPVDSLGTSEEELERQPKRFGRKRRYSKKSSDGSPTPGKRGKKGS PSAQSFEEELQSQRILANVRERQRTQSLNEAFAALRKIIPTLPSDKLSKIQLKLAARYI DFLYQVLQSDMDNKMTSCSYVAHERLSYAFSVWRMEGAWSMSASHTRTRPLEQ KLISEEDLAANDILDYKDDDDKV
<b>Purity</b>	> 80% as determined by SDS-PAGE and Coomassie blue staining
<b>Stability</b>	Stable for 3 months from receipt of products under proper storage and handling

 Tel: 1-631-559-9269    1-516-512-3133

 Email: [info@creative-biomart.com](mailto:info@creative-biomart.com)     Fax: 1-631-938-8127

 45-1 Ramsey Road, Shirley, NY 11967, USA

conditions.

**Storage** Store at -80 centigrade. Avoid repeated freeze-thaw cycles.

**Concentration** 50 µg/mL as determined by BCA

**Storage Buffer** 100 mM glycine, 25 mM Tris-HCl, pH 7.3.

## GENE INFORMATION

**Gene Name** TWIST2 twist family bHLH transcription factor 2 [ Homo sapiens (human) ]

**Official Symbol** TWIST2

**Synonyms** TWIST2; twist homolog 2 (Drosophila); twist-related protein 2; bHLHa39; Dermo 1; Dermo1; dermis-expressed protein 1; twist-related bHLH protein Dermo1; class A basic helix-loop-helix protein 39; MGC117334;

**Gene ID** 117581

**mRNA Refseq** NM\_057179

**Protein Refseq** NP\_476527

**MIM** 607556

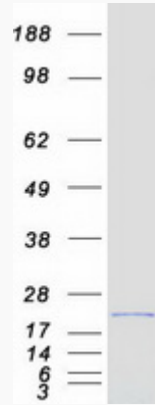
**UniProt ID** Q8WVJ9

 Tel: 1-631-559-9269 1-516-512-3133

 Email: [info@creative-biomart.com](mailto:info@creative-biomart.com)  Fax: 1-631-938-8127

 45-1 Ramsey Road, Shirley, NY 11967, USA

SDS-PAGE



 Tel: 1-631-559-9269 1-516-512-3133

 Email: [info@creative-biomart.com](mailto:info@creative-biomart.com)  Fax: 1-631-938-8127

 45-1 Ramsey Road, Shirley, NY 11967, USA