

# Recombinant Full Length Human TXLNA Protein, C-Flag-tagged

**Cat. No.** TXLNA-303HFL    **Lot. No.** (See product label)

## SPECIFICATION

<b>Product Overview</b>	Recombinant Full Length Human TXLNA Protein, fused to Flag-tag at C-terminus, was expressed in Mammalian cells.
<b>Species</b>	Human
<b>Source</b>	Mammalian Cells
<b>Description</b>	May be involved in intracellular vesicle traffic and potentially in calcium-dependent exocytosis in neuroendocrine cells.
<b>Form</b>	25 mM Tris HCl, pH 7.3, 100 mM glycine, 10% glycerol.
<b>Molecular Mass</b>	61.7 kDa
<b>AA Sequence</b>	<p>MKNQDKKNGAAKQSNPKSSPGQPEAGPEGAQERPSQAAPAVEAEGPGSSQAPRK  PEGAQARTAQSGALRD VSEELSRQLEDILSTYCVDDNNQGGPGEDGAQGEPAEPED  AEKSRTYVARNGEPEPTPVVNGEKEPSKGDP NTEEIRQSDEVGDRDHRRPQEKKK  AKGLGKEITLLMQTLNLTSTPEEKLAALCKKYAELLEHRNSQKQM KLLQKKQSQLV  QEKDHLGGEHSKAVLARSKLESLCRELQRHNRSLKEEGVQRAREEEEEKRKEVTSHF  QVT LNDIQLQMEQHNERNNSKLRQENMELAEERLKKLIEQYELREEHIDKVFHKHDLQ  QQLVDAKLQQAQEMLKE AEERHQREKDFLLKEAVESQRMCELMKQQETHLKQQL  ALYTEKFEFFQNTLSKSSSEVFTTFKQEMEKMTK KIKKLEKETTMYRSRWESSNKALL  EMAEKTVRDKELEGLQVKIQRLEKLCRALQTERNDLNKRVDLSA  GGQGSLTDSGPERRPEGPGAQAPSSPRVTEAPCYPGAPSTEASGQTGPQEPTSA</p>

 Tel: 1-631-559-9269    1-516-512-3133

 Email: [info@creative-biomart.com](mailto:info@creative-biomart.com)     Fax: 1-631-938-8127

 45-1 Ramsey Road, Shirley, NY 11967, USA

RATRTRPLEQKLISEEDLAANDILDYKDDDDKV

**Purity** > 80% as determined by SDS-PAGE and Coomassie blue staining.

**Stability** Stable for 12 months from the date of receipt of the product under proper storage and handling conditions. Avoid repeated freeze-thaw cycles.

**Storage** Store at -80 centigrade.

**Concentration** >50 ug/mL as determined by microplate BCA method.

**Preparation** Recombinant protein was captured through anti-DDK affinity column followed by conventional chromatography steps.

**Protein Families** Druggable Genome

**Full Length** Full L.

## GENE INFORMATION

**Gene Name** [TXLNA taxilin alpha \[ Homo sapiens \(human\) \]](#)

**Official Symbol** [TXLNA](#)

**Synonyms** IL14; TXLN

**Gene ID** [200081](#)

**mRNA Refseq** [NM\\_175852.4](#)

**Protein Refseq** [NP\\_787048.1](#)

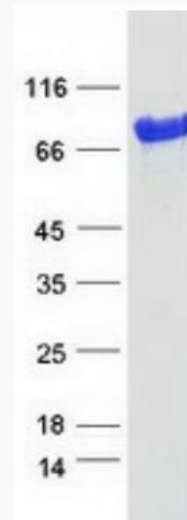
 Tel: 1-631-559-9269 1-516-512-3133

 Email: [info@creative-biomart.com](mailto:info@creative-biomart.com)  Fax: 1-631-938-8127

 45-1 Ramsey Road, Shirley, NY 11967, USA

MIM 608676

UniProt ID P40222



Coomassie blue staining of purified TXLNA protein.

Tel: 1-631-559-9269 1-516-512-3133

Email: [info@creative-biomart.com](mailto:info@creative-biomart.com) Fax: 1-631-938-8127

45-1 Ramsey Road, Shirley, NY 11967, USA