

Recombinant Human TXLNA Protein, His-tagged

Cat. No. TXLNA-514H Lot. No. (See product label)

SPECIFICATION

Product Overview	Recombinant Human TXLNA Protein (Lys328-Glu531) with N-His tag was expressed in E. coli.
Species	Human
Source	E.coli
ProteinLength	Lys328-Glu531
Description	Predicted to enable syntaxin binding activity. Predicted to be involved in exocytosis. Predicted to act upstream of or within B cell activation. Located in cytoplasm.
Form	Freeze-dried powder
Molecular Mass	Predicted Molecular Mass: 27.4 kDa Accurate Molecular Mass: 33 kDa
Purity	> 97%
Applications	Cell culture; Activity Assays.
Stability	The thermal stability is described by the loss rate. The loss rate was determined by accelerated thermal degradation test, that is, incubate the protein at 37 centigrade for 48h, and no obvious degradation and precipitation were observed. The loss rate is less than 5% within the expiration date under appropriate storage condition.

 Tel: 1-631-559-9269 1-516-512-3133

 Email: info@creative-biomart.com  Fax: 1-631-938-8127

 45-1 Ramsey Road, Shirley, NY 11967, USA

Storage	Avoid repeated freeze/thaw cycles. Store at 2-8 centigrade for one month. Aliquot and store at -80 centigrade for 12 months.
Storage Buffer	20mM Tris, 150mM NaCl, pH8.0, containing 1mM EDTA, 1mM DTT, 0.01% SKL, 5% Trehalose and Proclin300.
Reconstitution	Reconstitute in sterile water to a concentration of 0.1-1.0 mg/mL. Do not vortex.

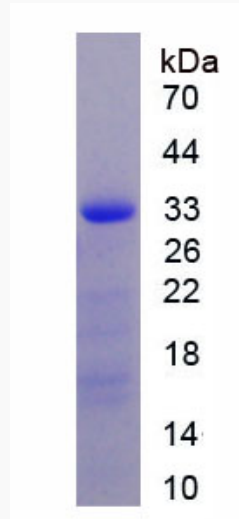
GENE INFORMATION

Gene Name	TXLNA taxilin alpha [Homo sapiens (human)]
Official Symbol	TXLNA
Synonyms	TXLNA; taxilin alpha; alpha-taxilin; DKFZp451J0118; interleukin 14; IL14; TXLN; RP4-622L5.4; MGC118870; MGC118871
Gene ID	200081
mRNA Refseq	NM_175852
Protein Refseq	NP_787048
MIM	608676
UniProt ID	P40222

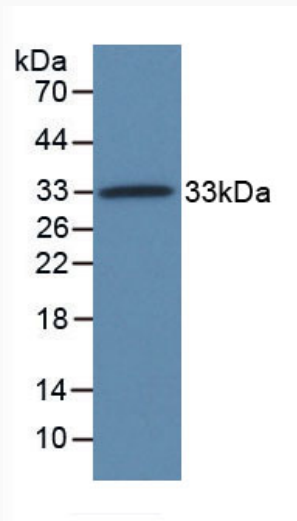
 Tel: 1-631-559-9269 1-516-512-3133

 Email: info@creative-biomart.com  Fax: 1-631-938-8127

 45-1 Ramsey Road, Shirley, NY 11967, USA



WB

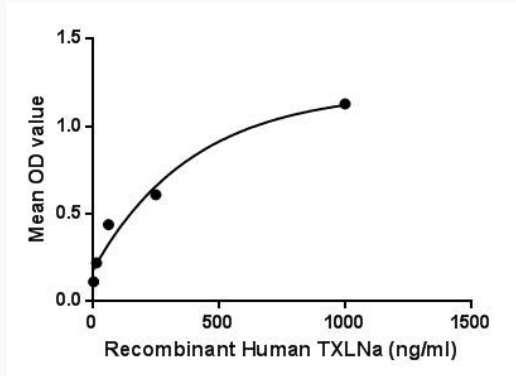


 Tel: 1-631-559-9269 1-516-512-3133

 Email: info@creative-biomart.com  Fax: 1-631-938-8127

 45-1 Ramsey Road, Shirley, NY 11967, USA

Binding activity



 Tel: 1-631-559-9269 1-516-512-3133

 Email: info@creative-biomart.com  Fax: 1-631-938-8127

 45-1 Ramsey Road, Shirley, NY 11967, USA