

Recombinant Human TXN Protein

Cat. No. TXN-155H **Lot. No.** (See product label)

SPECIFICATION

Product Overview	Recombinant Human TXN Protein without tag was expressed in E. coli.
Species	Human
Source	E.coli
Description	The protein encoded by this gene acts as a homodimer and is involved in many redox reactions. The encoded protein is active in the reversible S-nitrosylation of cysteines in certain proteins, which is part of the response to intracellular nitric oxide. This protein is found in the cytoplasm. Two transcript variants encoding different isoforms have been found for this gene.
Molecular Mass	11.7 kDa
Unit Definition	One unit is defined as the amount of enzyme required to produce 1 nmol of eosin per minute at 37 centigrade in 50 mM Tris-HCl, pH 7.5, 1 mM EDTA, and 0.2 mg/mL BSA containing 8.3 μM eosin-labeled insulin, 250 μM NADPH, and 0.2 U/mL thioredoxin reductase.
Applications	Enzyme activity, WB
Stability	≥ 6 months
Storage	At -80 centigrade.

 Tel: 1-631-559-9269 1-516-512-3133

 Email: info@creative-biomart.com  Fax: 1-631-938-8127

 45-1 Ramsey Road, Shirley, NY 11967, USA

Storage Buffer 60 mM ammonium bicarbonate pH 7.5, 5% Glycerol

GENE INFORMATION

Gene Name TXN thioredoxin [Homo sapiens (human)]

Official Symbol TXN

Synonyms TXN; thioredoxin; TRX; TRDX; TRX1; Trx80; thioredoxin; ADF; ATL-derived factor; SASP; TXN delta 3; surface-associated sulphhydryl protein; testicular tissue protein Li 199; thioredoxin delta 3

Gene ID 7295

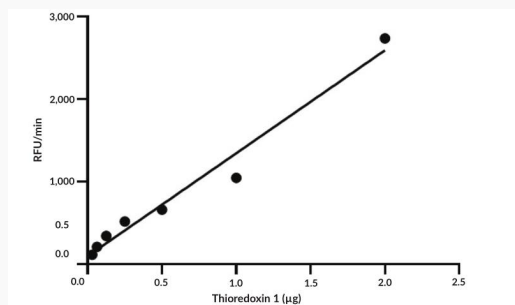
mRNA Refseq NM_003329

Protein Refseq NP_003320

MIM 187700

UniProt ID P10599

Thioredoxin 1 Activity



Thioredoxin 1 Activity was determined using Thioredoxin activity fluorescent assay

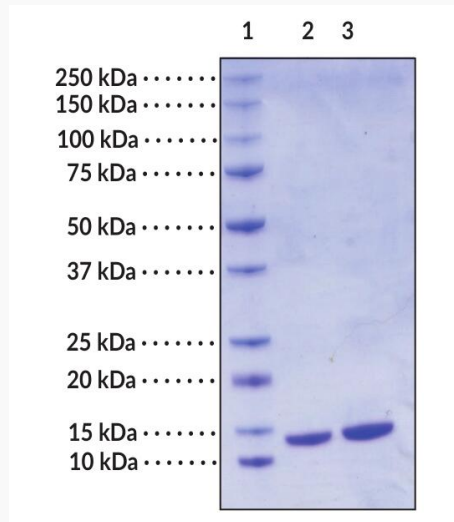
 Tel: 1-631-559-9269 1-516-512-3133

 Email: info@creative-biomart.com  Fax: 1-631-938-8127

 45-1 Ramsey Road, Shirley, NY 11967, USA

kit with 0.54 µg/mL eosin-labeled insulin substrate.

**SDS-PAGEA nalysis
of Thioredoxin 1**



Lane 1: MW Markers

Lane 2: Thioredoxin 1 (2 µg)

Lane 3: Thioredoxin 1 (4 µg)

 Tel: 1-631-559-9269 1-516-512-3133

 Email: info@creative-biomart.com  Fax: 1-631-938-8127

 45-1 Ramsey Road, Shirley, NY 11967, USA