

Active Recombinant Human TXN protein, His-tagged

Cat. No. TXN-2585H Lot. No. (See product label)

SPECIFICATION

Product Overview	Active Recombinant Human Thioredoxin/SASP/TXN Protein is produced by E. coli expression system. The target protein is expressed with sequence (Val2-Val105) of human Thioredoxin (Accession #NP_003320.2) fused with a 6xHis tag at the C-terminus.
Species	Human
Source	E.coli
ProteinLength	Val2-Val105
Form	Lyophilized from a 0.22 μ m filtered solution of PBS, pH 7.4.
Bio-activity	<p>1.Measured by its binding ability in a functional ELISA. Immobilized Human TXN Protein at 1 μg/mL (100 μL/well) can bind TXN Rabbit mAb with a linear range of 0.976-5.3 ng/mL.</p> <p>2.Measured by its ability to catalyze the reduction of insulin. The reaction leads to precipitation, which can be measured by absorbance at 650 nm. The specific activity is >9 A650/min/mg.</p>
Molecular Mass	13 kDa
Endotoxin	< 0.1 EU/ μ g of the protein by LAL method.
Purity	> 95% by SDS-PAGE.

 Tel: 1-631-559-9269 1-516-512-3133

 Email: info@creative-biomart.com  Fax: 1-631-938-8127

 45-1 Ramsey Road, Shirley, NY 11967, USA

Storage Store the lyophilized protein at -20°C to -80 °C for long term.
After reconstitution, the protein solution is stable at -20 °C for 3 months, at 2-8 °C for up to 1 week.

Reconstitution Reconstitute to a concentration of 0.1-0.5 mg/mL in sterile distilled water.

GENE INFORMATION

Gene Name TXN thioredoxin [Homo sapiens]

Official Symbol TXN

Synonyms TXN; thioredoxin; TRX; ADF; SASP; TXN delta 3; ATL-derived factor; thioredoxin delta 3; surface-associated sulphhydryl protein; TRDX; TRX1; MGC61975; DKFZp686B1993;

Gene ID 7295

mRNA Refseq NM_001244938

Protein Refseq NP_001231867

MIM 187700

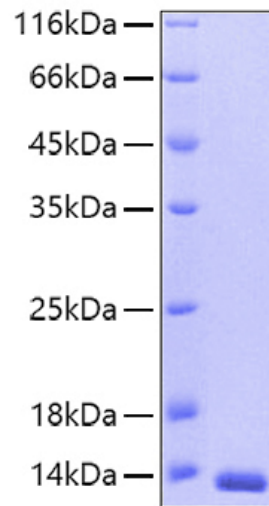
UniProt ID P10599

 Tel: 1-631-559-9269 1-516-512-3133

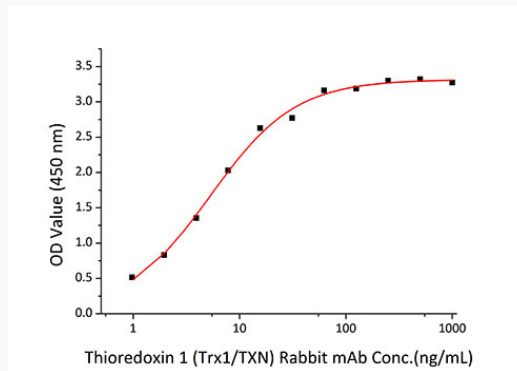
 Email: info@creative-biomart.com  Fax: 1-631-938-8127

 45-1 Ramsey Road, Shirley, NY 11967, USA

SDS-PAGE



Bio-activity



 Tel: 1-631-559-9269 1-516-512-3133

 Email: info@creative-biomart.com  Fax: 1-631-938-8127

 45-1 Ramsey Road, Shirley, NY 11967, USA