

# Recombinant Human TYK2 (JH2 domain, 575-869), N-FLAG-tagged

**Cat. No.** TYK2-01H    **Lot. No.** (See product label)

## SPECIFICATION

<b>Product Overview</b>	Human recombinant TYK2 (Non-receptor tyrosine-protein kinase TYK2), encompassing amino acids 575-869 containing pseudo-kinase domain JH2. This construct contains an N-terminal Flag-tag. The recombinant protein was affinity purified.
<b>Species</b>	Human
<b>Source</b>	Sf9 Cells
<b>ProteinLength</b>	575-869
<b>Description</b>	This gene encodes a member of the tyrosine kinase and, more specifically, the Janus kinases (JAKs) protein families. This protein associates with the cytoplasmic domain of type I and type II cytokine receptors and promulgate cytokine signals by phosphorylating receptor subunits. It is also a component of both the type I and type III interferon signaling pathways. As such, it may play a role in anti-viral immunity. A mutation in this gene has been associated with Immunodeficiency 35.
<b>Form</b>	Aqueous buffer solution
<b>Molecular Mass</b>	34 kDa
<b>Storage Buffer</b>	40 mM Tris-HCl, pH 8.0, 110 mM NaCl, 2.2 mM KCl, 0.04% Tween-20, 20% glycerol, and 3 mM DTT

 Tel: 1-631-559-9269    1-516-512-3133

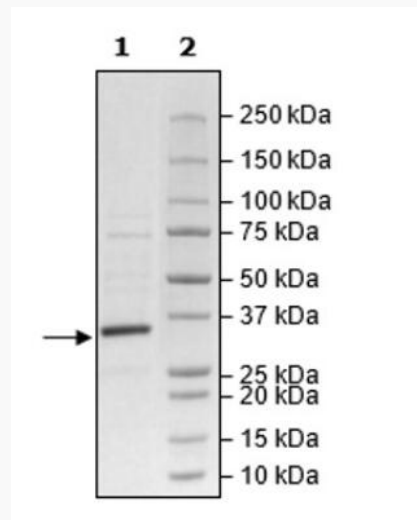
 Email: [info@creative-biomart.com](mailto:info@creative-biomart.com)     Fax: 1-631-938-8127

 45-1 Ramsey Road, Shirley, NY 11967, USA

## GENE INFORMATION

<b>Gene Name</b>	TYK2 tyrosine kinase 2 [ Homo sapiens (human) ]
<b>Official Symbol</b>	TYK2
<b>Synonyms</b>	TYK2; tyrosine kinase 2; JTK1; IMD35; non-receptor tyrosine-protein kinase TYK2; EC 2.7.10.2
<b>Gene ID</b>	7297
<b>mRNA Refseq</b>	NM_003331
<b>Protein Refseq</b>	NP_003322
<b>MIM</b>	176941
<b>UniProt ID</b>	P29597

### SDS-PAGE

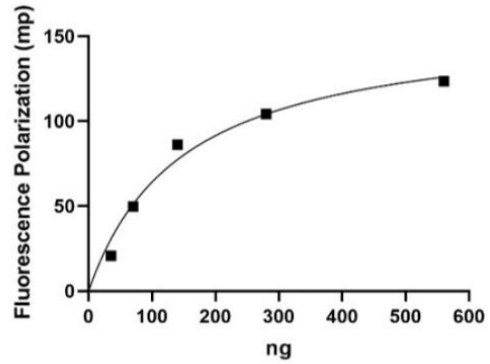


Tel: 1-631-559-9269 1-516-512-3133

Email: [info@creative-biomart.com](mailto:info@creative-biomart.com) Fax: 1-631-938-8127

45-1 Ramsey Road, Shirley, NY 11967, USA

**Activity**



 Tel: 1-631-559-9269 1-516-512-3133

 Email: [info@creative-biomart.com](mailto:info@creative-biomart.com)  Fax: 1-631-938-8127

 45-1 Ramsey Road, Shirley, NY 11967, USA