

Recombinant Human TYK2 Protein (556-1187), N-DYKDDDDK-tagged

Cat. No. TYK2-02H Lot. No. (See product label)

SPECIFICATION

Product Overview Human TYK2, catalytic/pseudo-kinase domain [556-1187(end) amino acids of accession number NP_003322.3] was expressed as N-terminal DYKDDDDK tagged, biotinylated protein (76 kDa) using baculovirus expression system. The protein was purified by using DYKDDDDK tag antibody agarose.

Species Human

Source Insect Cells

ProteinLength 556-1187

Description This gene encodes a member of the tyrosine kinase and, more specifically, the Janus kinases (JAKs) protein families. This protein associates with the cytoplasmic domain of type I and type II cytokine receptors and promulgate cytokine signals by phosphorylating receptor subunits. It is also a component of both the type I and type III interferon signaling pathways. As such, it may play a role in anti-viral immunity. A mutation in this gene has been associated with Immunodeficiency 35.

Molecular Mass 76 kDa

Purity 85%

Storage Store at -80 centigrade.
Avoid repeating freeze-thaws.

 Tel: 1-631-559-9269 1-516-512-3133

 Email: info@creative-biomart.com  Fax: 1-631-938-8127

 45-1 Ramsey Road, Shirley, NY 11967, USA

Storage Buffer 50 mM Tris-HCl, 150 mM NaCl, 0.05% Brij35, 1 mM DTT, 10% glycerol, pH7.5

GENE INFORMATION

Gene Name TYK2 tyrosine kinase 2 [Homo sapiens (human)]

Official Symbol TYK2

Synonyms TYK2; tyrosine kinase 2; JTK1; IMD35; non-receptor tyrosine-protein kinase TYK2; EC 2.7.10.2

Gene ID 7297

mRNA Refseq NM_003331

Protein Refseq NP_003322

MIM 176941

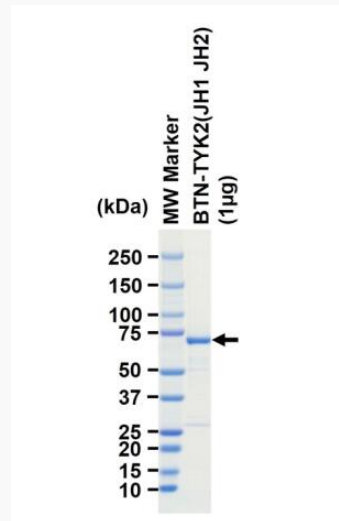
UniProt ID P29597

 Tel: 1-631-559-9269 1-516-512-3133

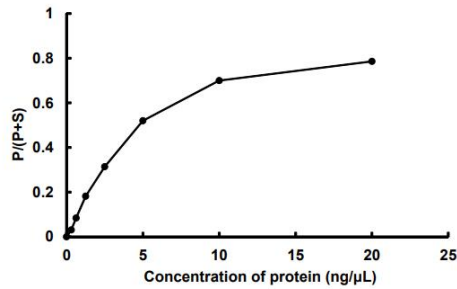
 Email: info@creative-biomart.com  Fax: 1-631-938-8127

 45-1 Ramsey Road, Shirley, NY 11967, USA

SDS-PAGE



Activity



The activity was measured by off-chip mobility shift assay(MSA). The enzyme was incubated with fluorescence-labeled substrate and Mg(or Mn)/ATP. The phosphorylated and unphosphorylated substrates were separated and detected by MSA device.

Tel: 1-631-559-9269 1-516-512-3133

Email: info@creative-biomart.com Fax: 1-631-938-8127

45-1 Ramsey Road, Shirley, NY 11967, USA