

Recombinant Human TYK2 protein(556-871aa), His-tagged

Cat. No. TYK2-2115H Lot. No. (See product label)

SPECIFICATION

Product Overview	Recombinant Human TYK2 protein(P29597)(556-871aa), fused with N-terminal His tag, was expressed in E. coli.
Species	Human
Source	E.coli
ProteinLength	556-871aa
Form	If the delivery form is liquid, the default storage buffer is Tris/PBS-based buffer, 5%-50% glycerol. If the delivery form is lyophilized powder, the buffer before lyophilization is Tris/PBS-based buffer, 6% Trehalose, pH 8.0.
Molecular Mass	39.3 kDa
Purity	Greater than 85% as determined by SDS-PAGE.
Storage	Store at -20°C/-80°C upon receipt, aliquoting is necessary for mutiple use. Avoid repeated freeze-thaw cycles.
Reconstitution	We recommend that this vial be briefly centrifuged prior to opening to bring the contents to the bottom. Please reconstitute protein in deionized sterile water to a concentration of 0.1-1.0 mg/mL. We recommend to add 5-50% of glycerol (final concentration) and aliquot for long-term storage at -20°C/-80°C.

 Tel: 1-631-559-9269 1-516-512-3133

 Email: info@creative-biomart.com  Fax: 1-631-938-8127

 45-1 Ramsey Road, Shirley, NY 11967, USA

AA Sequence

GETSNLIIMRGARASPRTLNLSQLSFHRVDQKEITQLSHLGQGTRTNVYEGRLRVEG
SGDPEEGKMDDDEDPLVPGRDRGQELRVVLKVLDPSSHHDIALAFYETASLMSQVSHT
HLAFVHGVCVRGPENIMVTEYVEHGPLDVWLRRRERGHVPMAWKMVVAQQLASALS
YLENKNLVHGNVCGRNILLARLGLAEGTSPFIKLSDPGVGLGALSREERVERIPWLAP
ECLPGGANSLSTAMDKWGFATLLEICFDGEAPLQSRSPSEKEHFYQRQHRLPEPS
CPQLATLTSQCLTYEPTQRPSFRTILRDLTRLQP

GENE INFORMATION

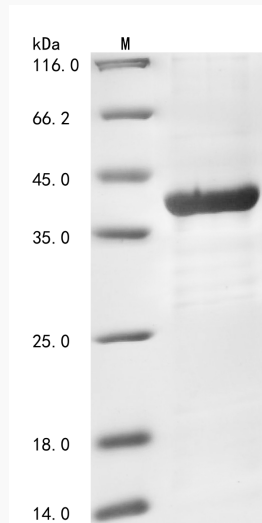
Gene Name	TYK2 tyrosine kinase 2 [Homo sapiens]
Official Symbol	TYK2
Synonyms	TYK2; tyrosine kinase 2; non-receptor tyrosine-protein kinase TYK2; JTK1;
Gene ID	7297
mRNA Refseq	NM_003331
Protein Refseq	NP_003322
MIM	176941
UniProt ID	P29597

 Tel: 1-631-559-9269 1-516-512-3133

 Email: info@creative-biomart.com  Fax: 1-631-938-8127

 45-1 Ramsey Road, Shirley, NY 11967, USA

SDS-PAGE



 Tel: 1-631-559-9269 1-516-512-3133

 Email: info@creative-biomart.com  Fax: 1-631-938-8127

 45-1 Ramsey Road, Shirley, NY 11967, USA