

# Recombinant Full Length Human TYMP Protein, C-Flag-tagged

Cat. No. TYMP-2074HFL Lot. No. (See product label)

## SPECIFICATION

<b>Product Overview</b>	Recombinant Full Length Human TYMP Protein, fused to Flag-tag at C-terminus, was expressed in Mammalian cells.
<b>Species</b>	Human
<b>Source</b>	Mammalian Cells
<b>Description</b>	This gene encodes an angiogenic factor which promotes angiogenesis in vivo and stimulates the in vitro growth of a variety of endothelial cells. It has a highly restricted target cell specificity acting only on endothelial cells. Mutations in this gene have been associated with mitochondrial neurogastrointestinal encephalomyopathy. Multiple alternatively spliced transcript variants have been identified.
<b>Form</b>	25 mM Tris HCl, pH 7.3, 100 mM glycine, 10% glycerol.
<b>Molecular Mass</b>	49.8 kDa
<b>AA Sequence</b>	<p>MAALMTPGTGAPPAPGDFSGEGSQGLPDPSPPEPKQLPELIRMKRDGGRLSEADIRG            FVAAVVNGSAQGAQ IGAMLMAIRLRGMDLEETSVLTQALAQSGQQLEWPEAWRQ            QLVDKHSTGGVGDVSLVLPALAAACGCKV PMISGRGLGHTGGTLDKLESIPGFNVI            QSPEQMQLLDQAGCCIVGQSEQLVPAEGILYAARDVTATVDS LPLITASILSKLVE            GLSALVVDVKFGGAAVFPNQEQAARELAKTLVGVGASLGLRVAAALTAMDKPLGRC            VGHAVEVEEALLCMDGAGPPDLRDLVTTLGGALLWLSGHAGTQAQGAARVAAALD            DGSALGRFERMLAAQ GVDPGLARALCSGSPAERRQLLPRAREQEELLAPADGTVE            LVRALPLALVLHELGAAGRSRAGEPLRLGVG AELLVDVQQLRRGTPWLRVHRDGP</p>

 Tel: 1-631-559-9269 1-516-512-3133

 Email: [info@creative-biomart.com](mailto:info@creative-biomart.com)  Fax: 1-631-938-8127

 45-1 Ramsey Road, Shirley, NY 11967, USA

ALSGPQSRALQEALVLSDRAPFAAPSPFAELVLPPQQ TRTRPLEQKLISEEDLAAND  
ILDYKDDDDKV

<b>Purity</b>	> 80% as determined by SDS-PAGE and Coomassie blue staining.
<b>Stability</b>	Stable for 12 months from the date of receipt of the product under proper storage and handling conditions. Avoid repeated freeze-thaw cycles.
<b>Storage</b>	Store at -80 centigrade.
<b>Concentration</b>	>50 ug/mL as determined by microplate BCA method.
<b>Preparation</b>	Recombinant protein was captured through anti-DDK affinity column followed by conventional chromatography steps.
<b>Protein Families</b>	Druggable Genome
<b>Protein Pathways</b>	Bladder cancer, Drug metabolism - other enzymes, Metabolic pathways, Pyrimidine metabolism
<b>Full Length</b>	Full L.

## GENE INFORMATION

<b>Gene Name</b>	TYMP thymidine phosphorylase [ Homo sapiens (human) ]
<b>Official Symbol</b>	TYMP
<b>Synonyms</b>	TP; ECGF; ECGF1; MNGIE; MEDPS1; MTDPS1; PDECGF; hPD-ECGF
<b>Gene ID</b>	1890

 Tel: 1-631-559-9269 1-516-512-3133

 Email: [info@creative-biomart.com](mailto:info@creative-biomart.com)  Fax: 1-631-938-8127

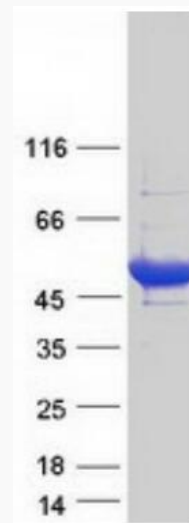
 45-1 Ramsey Road, Shirley, NY 11967, USA

mRNA Refseq [NM\\_001953.5](#)

Protein Refseq [NP\\_001944.1](#)

MIM [131222](#)

UniProt ID [P19971](#)



Coomassie blue staining of purified TYMP protein.

 Tel: 1-631-559-9269 1-516-512-3133

 Email: [info@creative-biomart.com](mailto:info@creative-biomart.com)  Fax: 1-631-938-8127

 45-1 Ramsey Road, Shirley, NY 11967, USA