

Recombinant Human TYRO3 Protein (Ala31-Ser418), C-Fc tagged

Cat. No. TYRO3-2215H Lot. No. (See product label)

SPECIFICATION

Product Overview	Recombinant human Tyro3 (Ala31-Ser418) fused with C-terminal Fc tag was expressed in Mammalian cells.
Species	Human
Source	Mammalian Cells
ProteinLength	Ala31-Ser418
Form	Lyophilized powder/frozen liquid
Molecular Mass	67.68 kDa
Purity	>90% as determined by SDS-PAGE
Notes	For research use only.
Storage	Use a manual defrost freezer and avoid repeated freeze thaw cycles. Store at 2 to 8 centigrade for one week. Store at -20 to -80 centigrade for twelve months from the date of receipt.
Storage Buffer	Supplied as solution form in PBS or lyophilized from PBS.
Reconstitution	Reconstitute in sterile water for a stock solution.

 Tel: 1-631-559-9269 1-516-512-3133

 Email: info@creative-biomart.com  Fax: 1-631-938-8127

 45-1 Ramsey Road, Shirley, NY 11967, USA

Shipping They are shipped out with dry ice/blue ice unless customers require otherwise.

GENE INFORMATION

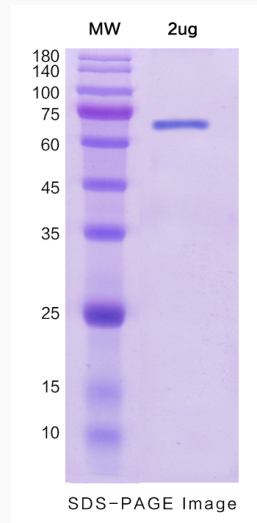
Gene Name	TYRO3 TYRO3 protein tyrosine kinase [Homo sapiens (human)]
Official Symbol	TYRO3
Synonyms	TYRO3; TYRO3 protein tyrosine kinase; RSE; tyrosine-protein kinase receptor TYRO3; Brt; Dtk; Sky; Tif; tyrosine-protein kinase DTK; tyrosine-protein kinase RSE; tyrosine-protein kinase SKY; tyrosine-protein kinase byk; BYK; FLJ16467;
Gene ID	7301
mRNA Refseq	NM_006293
Protein Refseq	NP_006284
MIM	600341
UniProt ID	Q06418

 Tel: 1-631-559-9269 1-516-512-3133

 Email: info@creative-biomart.com  Fax: 1-631-938-8127

 45-1 Ramsey Road, Shirley, NY 11967, USA

SDS-PAGE



 Tel: 1-631-559-9269 1-516-512-3133

 Email: info@creative-biomart.com  Fax: 1-631-938-8127

 45-1 Ramsey Road, Shirley, NY 11967, USA