

Recombinant Human TYRO3 protein, His-tagged

Cat. No. TYRO3-855H Lot. No. (See product label)

SPECIFICATION

Product Overview	Recombinant Human TYRO3 protein(Q06418)(Ala41-Trp429), fused with C-terminal His tag, was expressed in HEK293.
Species	Human
Source	HEK293
ProteinLength	Ala41-Trp429
Tag	C-His
Form	Supplied as 0.22µm filtered solution in PBS (pH 7.4).
Bio-activity	Human GAS6, His Tag immobilized on CM5 Chip can bind Human TYRO3, His Tag with an affinity constant of 2.36 µM as determined in SPR assay (Biacore T200).
Molecular Mass	The protein has a predicted MW of 42.8 kDa. Due to glycosylation, the protein migrates to 60-70 kDa based on Tris-Bis PAGE result.
Endotoxin	Less than 1EU per µg by the LAL method.
Purity	> 95% as determined by Tris-Bis PAGE;> 95% as determined by HPLC
Storage	Valid for 12 months from date of receipt when stored at -80°C. Recommend to aliquot the protein into smaller quantities for optimal storage. Please do not repeated freeze-

 Tel: 1-631-559-9269 1-516-512-3133

 Email: info@creative-biomart.com  Fax: 1-631-938-8127

 45-1 Ramsey Road, Shirley, NY 11967, USA

thaw cycles.

Reconstitution

It is recommended that sterile water be added to the vial to prepare a stock solution of 0.2 ug/ul. Centrifuge the vial at 4°C before opening to recover the entire contents.

GENE INFORMATION

Gene Name

TYRO3 TYRO3 protein tyrosine kinase [Homo sapiens]

Official Symbol

TYRO3

Synonyms

TYRO3; TYRO3 protein tyrosine kinase; RSE; tyrosine-protein kinase receptor
 TYRO3; Brt; Dtk; Sky; Tif; tyrosine-protein kinase DTK; tyrosine-protein kinase RSE;
 tyrosine-protein kinase SKY; tyrosine-protein kinase byk; BYK; FLJ16467;

Gene ID

7301

mRNA Refseq

NM_006293

Protein Refseq

NP_006284

MIM

600341

UniProt ID

Q06418

 Tel: 1-631-559-9269 1-516-512-3133

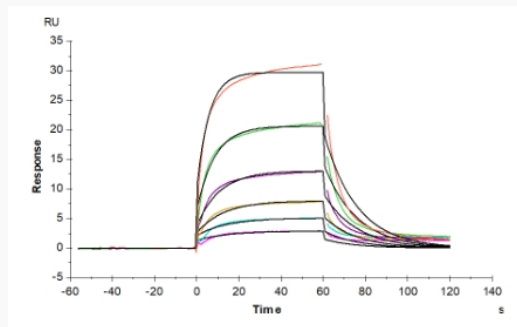
 Email: info@creative-biomart.com  Fax: 1-631-938-8127

 45-1 Ramsey Road, Shirley, NY 11967, USA

Tris-Bis PAGE



SPR Data



 Tel: 1-631-559-9269 1-516-512-3133

 Email: info@creative-biomart.com  Fax: 1-631-938-8127

 45-1 Ramsey Road, Shirley, NY 11967, USA