

# Recombinant Full Length Human TYRP1 Protein, C-Flag-tagged

**Cat. No.** TYRP1-883HFL    **Lot. No.** (See product label)

## SPECIFICATION

<b>Product Overview</b>	Recombinant Full Length Human TYRP1 Protein, fused to Flag-tag at C-terminus, was expressed in Mammalian cells.
<b>Species</b>	Human
<b>Source</b>	Mammalian Cells
<b>Description</b>	This gene encodes a melanosomal enzyme that belongs to the tyrosinase family and plays an important role in the melanin biosynthetic pathway. Defects in this gene are the cause of rufous oculocutaneous albinism and oculocutaneous albinism type III.
<b>Form</b>	25 mM Tris HCl, pH 7.3, 100 mM glycine, 10% glycerol.
<b>Molecular Mass</b>	58 kDa
<b>AA Sequence</b>	MSAPKLLSLGCIFFPLLLFQQARAQFPRQCATVEALRSGMCCPDLSPVSGPGTDRC GSSSGRGRCEAVTA DSRPHSPQYPHDGRDDREWPLRFFNRTCHCNGNFSGHN CGTCRPGWRGAACDQRVLIVRRNLLDLSKEE KNHFVRALDMAKRTTHPLFVIATR SEEILGPDGNTQPQFENISINYFVWTHYYSVKKTFGLVVGQESFGE VDFSHEGPAFLT WHRYHLLRLEKDMQEMQLQEPSFSLPYWNFATGKNVCDICTDDLMGSRSNFDSTLIS PN SVFSQWRVVCDSLEDYDTLGTLCNSTEDGPIRRNPAGNVARPMVQRLPEPQDV AQCLEVGLFDTPPFYSN STNSFRNTVEGYSDPTGKYDPAVRSLHNLHLFLNGTGG QTHLSPNDPIFVLLHTFTDAVFDEWLRRYNA DISTFPLENAPIGHNRQYNMVPFWPP VTNTEMFVTAPDNLGYTYEIQWPSREFSVPEIIAIVVGALLV

 Tel: 1-631-559-9269    1-516-512-3133

 Email: [info@creative-biomart.com](mailto:info@creative-biomart.com)     Fax: 1-631-938-8127

 45-1 Ramsey Road, Shirley, NY 11967, USA

ALIFGTASYLIRARRSMDEANQPLLTDQYQCYAEEYEKLNPNQSVVTRTRPLEQKLI  
SEEDLAANDILDYKDDDDKV

**Purity** > 80% as determined by SDS-PAGE and Coomassie blue staining.

**Stability** Stable for 12 months from the date of receipt of the product under proper storage and handling conditions. Avoid repeated freeze-thaw cycles.

**Storage** Store at -80 centigrade.

**Concentration** >50 ug/mL as determined by microplate BCA method.

**Preparation** Recombinant protein was captured through anti-DDK affinity column followed by conventional chromatography steps.

**Protein Families** Druggable Genome, Transmembrane

**Protein Pathways** Melanogenesis, Metabolic pathways, Tyrosine metabolism

**Full Length** Full L.

## GENE INFORMATION

**Gene Name** TYRP1 tyrosinase related protein 1 [ Homo sapiens (human) ]

**Official Symbol** TYRP1

**Synonyms** TRP; CAS2; CATB; GP75; OCA3; TRP1; TYRP; b-PROTEIN

**Gene ID** 7306

 Tel: 1-631-559-9269 1-516-512-3133

 Email: [info@creative-biomart.com](mailto:info@creative-biomart.com)  Fax: 1-631-938-8127

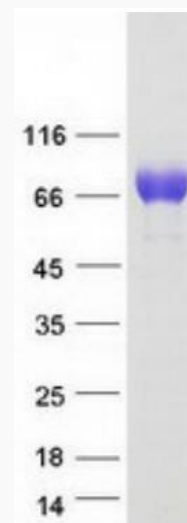
 45-1 Ramsey Road, Shirley, NY 11967, USA

mRNA Refseq [NM\\_000550.3](#)

Protein Refseq [NP\\_000541.1](#)

MIM [115501](#)

UniProt ID [P17643](#)



Coomassie blue staining of purified TYRP1 protein.

 Tel: 1-631-559-9269 1-516-512-3133

 Email: [info@creative-biomart.com](mailto:info@creative-biomart.com)  Fax: 1-631-938-8127

 45-1 Ramsey Road, Shirley, NY 11967, USA