

## Recombinant Rat Tacr2 protein, His & T7-tagged

**Cat. No.** Tacr2-614R    **Lot. No.** (See product label)

### SPECIFICATION

<b>Product Overview</b>	Recombinant Rat Tacr2 aa. (Met1~Val200 (Accession # P16610)) fused with N-terminal His & T7 tag was produced in E. coli cells.
<b>Species</b>	Rat
<b>Source</b>	E.coli
<b>ProteinLength</b>	Met1~Val200
<b>Description</b>	G-protein coupled receptor for tachykinin K (neurokinin A); coupled to the phosphatidylinositol-calcium second messenger system.
<b>Form</b>	Freeze-dried powder
<b>Molecular Mass</b>	Predicted Molecular Mass: 25.8kDa
<b>Endotoxin</b>	<1.0EU per 1g (determined by the LAL method)
<b>Purity</b>	>95%
<b>Characteristic</b>	The isoelectric point is 8.4.
<b>Applications</b>	SDS-PAGE; WB; ELISA; IP
<b>Stability</b>	The thermal stability is described by the loss rate. The loss rate was determined by

 Tel: 1-631-559-9269    1-516-512-3133

 Email: [info@creative-biomart.com](mailto:info@creative-biomart.com)     Fax: 1-631-938-8127

 45-1 Ramsey Road, Shirley, NY 11967, USA

accelerated thermal degradation test, that is, incubate the protein at 37°C for 48h, and no obvious degradation and precipitation were observed. The loss rate is less than 5% within the expiration date under appropriate storage condition.

**Storage**

Avoid repeated freeze/thaw cycles. Store at 2-8°C for one month. Aliquot and store at -80°C for 12 months.

**Storage buffer**

Supplied as lyophilized form in PBS, pH7.4, containing 5% sucrose, 0.01% sarcosyl.

**Reconstitution**

Reconstitute in sterile PBS, pH7.2-pH7.4.

## GENE INFORMATION

**Gene Name**

Tacr2 tachykinin receptor 2 [ *Rattus norvegicus* (Norway rat) ]

**Official Symbol**

Tacr2

**Synonyms**

Tacr2; tachykinin receptor 2; Tac2r; substance-K receptor; NK-2 receptor; NK-2R; SKR; Tachykinin 2 (substance K) receptor; neurokinin A receptor

**Gene ID**

25007

**mRNA Refseq**

NM\_080768.1

**Protein Refseq**

NP\_542946.1

**UniProt ID**

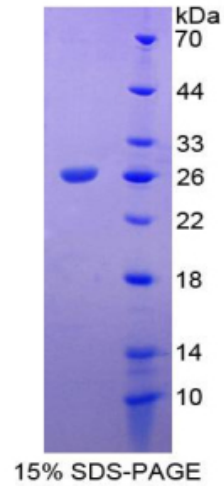
P16610

 Tel: 1-631-559-9269 1-516-512-3133

 Email: [info@creative-biomart.com](mailto:info@creative-biomart.com)  Fax: 1-631-938-8127

 45-1 Ramsey Road, Shirley, NY 11967, USA

**SDS-PAGE**



 Tel: 1-631-559-9269 1-516-512-3133

 Email: [info@creative-biomart.com](mailto:info@creative-biomart.com)  Fax: 1-631-938-8127

 45-1 Ramsey Road, Shirley, NY 11967, USA