

Recombinant Mouse Tat protein, His & T7-tagged

Cat. No. Tat-1041M Lot. No. (See product label)

SPECIFICATION

Product Overview	Recombinant Mouse Tat aa. (Pro190~Lys454 (Accession # Q8QZR1) fused with N-terminal His & T7 tag was produced in E. coli cells.
Species	Mouse
Source	E.coli
ProteinLength	Pro190~Lys454
Description	This gene encodes a liver-specific mitochondrial enzyme that catalyzes the conversion of L-tyrosine into p-hydroxyphenylpyruvate. Regulated by glucocorticoid and polypeptide hormones, this gene's expression is affected by deletion of a regulatory region near the albino locus on chromosome 7. Mutations in this gene cause tyrosinemia type II in humans.
Form	Freeze-dried powder
Molecular Mass	Predicted Molecular Mass: 33.7kDa.
Endotoxin	<1.0EU per 1g (determined by the LAL method)
Purity	>95%
Characteristic	The isoelectric point is 5.0.

 Tel: 1-631-559-9269 1-516-512-3133

 Email: info@creative-biomart.com  Fax: 1-631-938-8127

 45-1 Ramsey Road, Shirley, NY 11967, USA

Applications	SDS-PAGE; WB; ELISA; IP.
Stability	The thermal stability is described by the loss rate of the target protein. The loss rate was determined by accelerated thermal degradation test, that is, incubate the protein at 37°C for 48h, and no obvious degradation and precipitation were observed. (Referring from China Biological Products Standard, which was calculated by the Arrhenius equation.) The loss of this protein is less than 5% within the expiration date under appropriate storage condition.
Storage	Avoid repeated freeze/thaw cycles. Store at 2-8°C for one month. Aliquot and store at -80°C for 12 months.
Storage buffer	Supplied as lyophilized form in 20mM Tris, 150mM NaCl, pH8.0, containing 1mM EDTA, 1mM DTT, 0.01% sarcosyl, 5% trehalose, and preservative.
Reconstitution	Reconstitute in sterile ddH ₂ O.
GENE INFORMATION	
Gene Name	Tat tyrosine aminotransferase [<i>Mus musculus</i> (house mouse)]
Official Symbol	Tat
Synonyms	Tat; tyrosine aminotransferase; L-tyrosine:2-oxoglutarate aminotransferase; tyrosine transaminase
Gene ID	234724
mRNA Refseq	NM_146214.3
Protein Refseq	NP_666326.1

 Tel: 1-631-559-9269 1-516-512-3133

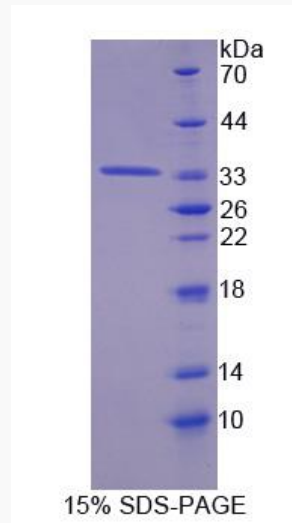
 Email: info@creative-biomart.com  Fax: 1-631-938-8127

 45-1 Ramsey Road, Shirley, NY 11967, USA

UniProt ID

Q8QZR1

SDS-PAGE



 Tel: 1-631-559-9269 1-516-512-3133

 Email: info@creative-biomart.com  Fax: 1-631-938-8127

 45-1 Ramsey Road, Shirley, NY 11967, USA