

Recombinant Rat Tfpi2 protein, His-tagged

Cat. No. Tfpi2-1997R Lot. No. (See product label)

SPECIFICATION

Product Overview	Recombinant Rat Tfpi2 aa. (Val26~Ser230 (Accession # G3V7D5)) fused with N-terminal His tag was produced in E. coli cells.
Species	Rat
Source	E.coli
ProteinLength	Val26~Ser230
Form	Freeze-dried powder
Molecular Mass	27kDa as determined by SDS-PAGE reducing conditions.
Endotoxin	<1.0EU per 1ug (determined by the LAL method)
Purity	> 95%
Characteristic	The isoelectric point is 9.3.
Applications	SDS-PAGE; WB; ELISA; IP.
Stability	The thermal stability is described by the loss rate of the target protein. The loss rate was determined by accelerated thermal degradation test, that is, incubate the protein at 37°C for 48h, and no obvious degradation and precipitation were observed. (Referring from China Biological Products Standard, which was calculated by the

 Tel: 1-631-559-9269 1-516-512-3133

 Email: info@creative-biomart.com  Fax: 1-631-938-8127

 45-1 Ramsey Road, Shirley, NY 11967, USA

Arrhenius equation.) The loss of this protein is less than 5% within the expiration date under appropriate storage condition.

Storage

Avoid repeated freeze/thaw cycles. Store at 2-8°C for one month. Aliquot and store at -80°C for 12 months.

Storage Buffer

Supplied as lyophilized form in PBS, pH7.4, containing 5% sucrose, 0.01% sarcosyl.

Reconstitution

Reconstitute in sterile PBS, pH7.2-pH7.4.

GENE INFORMATION

Gene Name

Tfpi2 tissue factor pathway inhibitor 2 [*Rattus norvegicus* (Norway rat)]

Official Symbol

Tfpi2

Synonyms

PTPN13; protein tyrosine phosphatase, non-receptor type 13; PNP1; FAP-1; PTP1E; PTPL1; PTPLE; PTP-BL; hPTP1E; PTP-BAS; tyrosine-protein phosphatase non-receptor type 13; fas-associated protein-tyrosine phosphatase 1; hPTPE1; protein tyrosine phosphatase, non-receptor type 13 (APO-1/CD95 (Fas)-associated phosphatase); protein-tyrosine phosphatase 1E; protein-tyrosine phosphatase PTPL1

Gene ID

286926

mRNA Refseq

NM_173141.1

Protein Refseq

NP_775164.1

UniProt ID

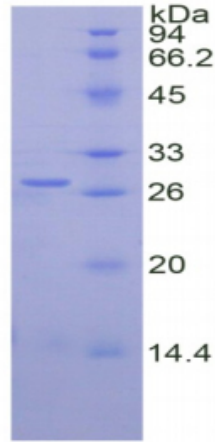
G3V7D5

 Tel: 1-631-559-9269 1-516-512-3133

 Email: info@creative-biomart.com  Fax: 1-631-938-8127

 45-1 Ramsey Road, Shirley, NY 11967, USA

Rat TFPI2



15% SDS-PAGE

SDS-PAGE

 Tel: 1-631-559-9269 1-516-512-3133

 Email: info@creative-biomart.com  Fax: 1-631-938-8127

 45-1 Ramsey Road, Shirley, NY 11967, USA