

## Active Recombinant Mouse Tgfb1 Protein (Alag279-Ser390), C-His tagged, Animal-free, Carrier-free

Cat. No. Tgfb1-83M Lot. No. (See product label)

### SPECIFICATION

<b>Product Overview</b>	Recombinant Mouse Tgfb1 Protein (Alag279-Ser390) with C-His tag was expressed in E. coli and Animal-free as well as Carrier-free.
<b>Species</b>	Mouse
<b>Source</b>	E.coli
<b>ProteinLength</b>	Alag279-Ser390
<b>Description</b>	The transforming Growth Factors beta (TGF beta) family of cytokines are ubiquitous, multifunctional, and essential to survival. They play the central roles in growth, development, inflammation, repair, and host immunity. The mammalian TGF beta isoforms (TGF beta 1, beta 2 and beta 3) are secreted as potential precursors and possess a variety of cell surface receptors and produces at least two mediate signal transductions.
<b>Form</b>	Lyophilized
<b>Bio-activity</b>	Measure by its ability to inhibit the IL-4 dependent proliferation in HT-2 cells. The ED50 for this effect is < 0.1 ng/mL.
<b>Molecular Mass</b>	The protein has a calculated MW of 13.8 kDa. The protein migrates as 16 kDa under reducing condition (SDS-PAGE analysis).

 Tel: 1-631-559-9269 1-516-512-3133

 Email: [info@creative-biomart.com](mailto:info@creative-biomart.com)  Fax: 1-631-938-8127

 45-1 Ramsey Road, Shirley, NY 11967, USA

<b>Endotoxin</b>	< 0.1 EU/μg of the protein by the LAL method.
<b>Purity</b>	>98% as determined by SDS-PAGE analysis.
<b>Storage</b>	This product is stable after storage at: -20 centigrade for 12 months in lyophilized state from date of receipt. -20 or -80 centigrade for 1 month under sterile conditions after reconstitution. Avoid repeated freeze/thaw cycles.
<b>Storage Buffer</b>	Lyophilized from a 0.2 μm filtered solution containing 20 mM sodium citrate and 0.2 M NaCl, pH 3.5.
<b>Reconstitution</b>	It is recommended to reconstitute the lyophilized protein in sterile H <sub>2</sub> O to a concentration not less than 200 μg/mL and incubate the stock solution for at least 20 min to ensure sufficient re-dissolved.
<b>Shipping</b>	The product is shipped with polar packs. Upon receipt, store it immediately at -20 centigrade or lower for long term storage.

## GENE INFORMATION

<b>Gene Name</b>	Tgfb1 transforming growth factor, beta 1 [ <i>Mus musculus</i> (house mouse) ]
<b>Official Symbol</b>	Tgfb1
<b>Synonyms</b>	TGFB1; transforming growth factor, beta 1; transforming growth factor beta-1; TGF-beta 1; TGF-beta-1; regulatory protein; transforming growth factor-beta 1; Tgfb; Tgfb-1; TGFbeta1; TGF-beta1;
<b>Gene ID</b>	21803

 Tel: 1-631-559-9269 1-516-512-3133

 Email: [info@creative-biomart.com](mailto:info@creative-biomart.com)  Fax: 1-631-938-8127

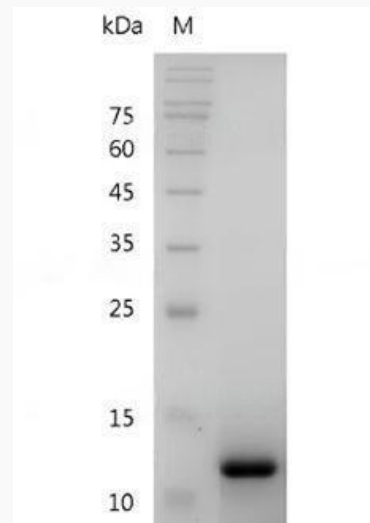
 45-1 Ramsey Road, Shirley, NY 11967, USA

mRNA Refseq [NM\\_011577](#)

Protein Refseq [NP\\_035707](#)

UniProt ID [P04202](#)

**SDS-PAGE analysis  
of recombinant  
mouse TGF Beta 1.**



 Tel: 1-631-559-9269 1-516-512-3133

 Email: [info@creative-biomart.com](mailto:info@creative-biomart.com)  Fax: 1-631-938-8127

 45-1 Ramsey Road, Shirley, NY 11967, USA