

# Active Recombinant Mouse Tgfbr2 Protein(Ile24-Asp159), His-tagged

**Cat. No.** Tgfbr2-6817M    **Lot. No.** (See product label)

## SPECIFICATION

<b>Product Overview</b>	Active Recombinant Mouse Tgfbr2 Protein(Q62312-2)(Ile24-Asp159), fused with C-terminal His tag, was expressed in HEK293.
<b>Species</b>	Mouse
<b>Source</b>	HEK293
<b>ProteinLength</b>	Ile24-Asp159
<b>Form</b>	Lyophilized from a 0.2 µm filtered solution of PBS, pH 7.4.
<b>Bio-activity</b>	Measured by its ability to inhibit TGF-beta 1 activity on TF-1 human erythroleukemic cells.The ED50 for this effect is 1680.39ng/ml in the presence of 1ng/ml of recombinant human TGF-beta 1.
<b>Molecular Mass</b>	16.2 KDa
<b>Endotoxin</b>	Less than 0.1 ng/g (1 EU/g) as determined by LAL test.
<b>Purity</b>	Greater than 95% as determined by reducing SDS-PAGE.
<b>Storage</b>	Lyophilized protein should be stored at ≤ -20°C, stable for one year after receipt. Reconstituted protein solution can be stored at 2-8°C for 2-7 days. Aliquots of reconstituted samples are stable at ≤ -20°C for 3 months.

 Tel: 1-631-559-9269    1-516-512-3133

 Email: [info@creative-biomart.com](mailto:info@creative-biomart.com)     Fax: 1-631-938-8127

 45-1 Ramsey Road, Shirley, NY 11967, USA

**Reconstitution**

Always centrifuge tubes before opening. Do not mix by vortex or pipetting.  
It is not recommended to reconstitute to a concentration less than 100µg/ml.  
Dissolve the lyophilized protein in distilled water.  
Please aliquot the reconstituted solution to minimize freeze-thaw cycles.

**GENE INFORMATION**

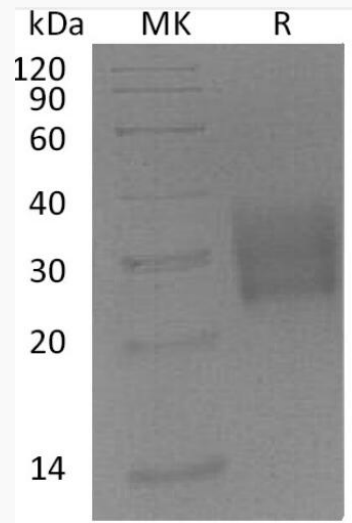
<b>Gene Name</b>	<a href="#">Tgfbr2 transforming growth factor, beta receptor II [ Mus musculus ]</a>
<b>Official Symbol</b>	<a href="#">Tgfbr2</a>
<b>Synonyms</b>	TGFBR2; transforming growth factor, beta receptor II; TGF-beta receptor type-2; TGFR-2; TGF-beta receptor II; TGF-beta receptor type II; TGF-beta type II receptor; transforming growth factor-beta receptor type II; DNIIR; RIIDN; TBR-II; AU042018; TbetaRII; TbetaR-II; 1110020H15Rik;
<b>Gene ID</b>	<a href="#">21813</a>
<b>mRNA Refseq</b>	<a href="#">NM_009371</a>
<b>Protein Refseq</b>	<a href="#">NP_033397</a>

 Tel: 1-631-559-9269 1-516-512-3133

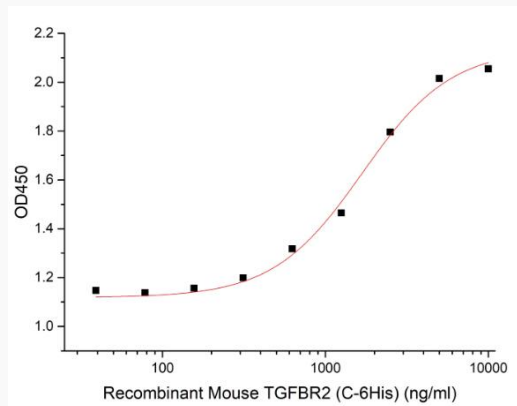
 Email: [info@creative-biomart.com](mailto:info@creative-biomart.com)  Fax: 1-631-938-8127

 45-1 Ramsey Road, Shirley, NY 11967, USA

**SDS-PAGE**



**Cell Based Assay**



 Tel: 1-631-559-9269 1-516-512-3133

 Email: [info@creative-biomart.com](mailto:info@creative-biomart.com)  Fax: 1-631-938-8127

 45-1 Ramsey Road, Shirley, NY 11967, USA