

## Recombinant Mouse Tgm1 protein, His & GST-tagged

Cat. No. Tgm1-1782M Lot. No. (See product label)

### SPECIFICATION

<b>Product Overview</b>	Recombinant Mouse Tgm1 aa. (Leu337~Arg607 (Accession # Q9JLF6)) fused with N-terminal His & GST tag was produced in E. coli cells.
<b>Species</b>	Mouse
<b>Source</b>	E.coli
<b>ProteinLength</b>	Leu337~Arg607
<b>Form</b>	Freeze-dried powder
<b>Molecular Mass</b>	Predicted Molecular Mass: 62.3kDa.
<b>Endotoxin</b>	<1.0EU per 1ug (determined by the LAL method)
<b>Purity</b>	>95%
<b>Characteristic</b>	The isoelectric point is 5.7.
<b>Applications</b>	SDS-PAGE; WB; ELISA; IP.
<b>Stability</b>	The thermal stability is described by the loss rate of the target protein. The loss rate was determined by accelerated thermal degradation test, that is, incubate the protein at 37°C for 48h, and no obvious degradation and precipitation were observed. (Referring from China Biological Products Standard, which was calculated by the

 Tel: 1-631-559-9269 1-516-512-3133

 Email: [info@creative-biomart.com](mailto:info@creative-biomart.com)  Fax: 1-631-938-8127

 45-1 Ramsey Road, Shirley, NY 11967, USA

Arrhenius equation.) The loss of this protein is less than 5% within the expiration date under appropriate storage condition.

**Storage**

Avoid repeated freeze/thaw cycles. Store at 2-8°C for one month. Aliquot and store at -80°C for 12 months.

**Storage Buffer**

Supplied as lyophilized form in PBS, pH7.4, containing 5% sucrose, 0.01% sarcosyl.

**Reconstitution**

Reconstitute in sterile PBS, pH7.2-pH7.4.

## GENE INFORMATION

**Gene Name**

[Tgm1 transglutaminase 1, K polypeptide \[ Mus musculus \(house mouse\) \]](#)

**Official Symbol**

[Tgm1](#)

**Synonyms**

TAP1; transporter 1, ATP binding cassette subfamily B member; APT1; PSF1; ABC17; ABCB2; PSF-1; RING4; TAP1N; D6S114E; TAP1\*0102N; antigen peptide transporter 1; ABC transporter, MHC 1; ATP-binding cassette sub-family B member 2; ATP-binding cassette, sub-family B (MDR/TAP), member 2; peptide supply factor 1; peptide transporter PSF1; peptide transporter TAP1; peptide transporter involved in antigen processing 1; really interesting new gene 4 protein; transporter 1 ATP-binding cassette sub-family B; transporter 1, ATP-binding cassette, sub-family B (MDR/TAP); transporter associated with antigen processing; transporter, ATP-binding cassette, major histocompatibility complex, 1

**Gene ID**

[21816](#)

**mRNA Refseq**

[NM\\_001161714.1](#)

**Protein Refseq**

[NP\\_001155186.1](#)

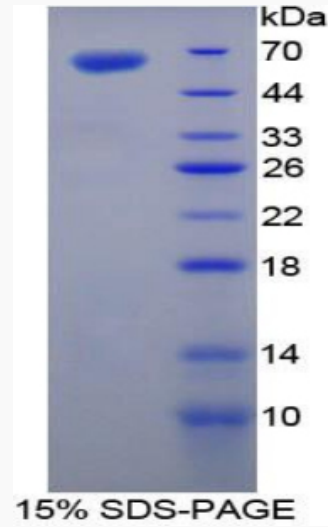
 Tel: 1-631-559-9269 1-516-512-3133

 Email: [info@creative-biomart.com](mailto:info@creative-biomart.com)  Fax: 1-631-938-8127

 45-1 Ramsey Road, Shirley, NY 11967, USA

UniProt ID

Q9JLF6



SDS-PAGE

 Tel: 1-631-559-9269 1-516-512-3133

 Email: [info@creative-biomart.com](mailto:info@creative-biomart.com)  Fax: 1-631-938-8127

 45-1 Ramsey Road, Shirley, NY 11967, USA