

Recombinant Rat Tgm1 protein, His & GST-tagged

Cat. No. Tgm1-1783R **Lot. No.** (See product label)

SPECIFICATION

Product Overview	Recombinant Rat Tgm1 aa. (Ala504~Glu737 (Accession # P23606)) fused with N-terminal His & GST tag was produced in E. coli cells.
Species	Rat
Source	E.coli
ProteinLength	Ala504~Glu737
Description	Transglutaminase enzyme that catalyzes the cross-linking of proteins and the conjugation of polyamines to proteins; stabilizes protein assemblies.
Form	Freeze-dried powder
Molecular Mass	Predicted Molecular Mass: 57.7kDa.
Endotoxin	<1.0EU per 1ug (determined by the LAL method)
Purity	>95%
Characteristic	The isoelectric point is 6.3.
Applications	SDS-PAGE; WB; ELISA; IP.
Stability	The thermal stability is described by the loss rate of the target protein. The loss rate

 Tel: 1-631-559-9269 1-516-512-3133

 Email: info@creative-biomart.com  Fax: 1-631-938-8127

 45-1 Ramsey Road, Shirley, NY 11967, USA

was determined by accelerated thermal degradation test, that is, incubate the protein at 37°C for 48h, and no obvious degradation and precipitation were observed. (Referring from China Biological Products Standard, which was calculated by the Arrhenius equation.) The loss of this protein is less than 5% within the expiration date under appropriate storage condition.

Storage	Avoid repeated freeze/thaw cycles. Store at 2-8°C for one month. Aliquot and store at -80°C for 12 months.
Storage Buffer	Supplied as lyophilized form in PBS, pH7.4, containing 5% sucrose, 0.01% sarcosyl.
Reconstitution	Reconstitute in sterile PBS, pH7.2-pH7.4.

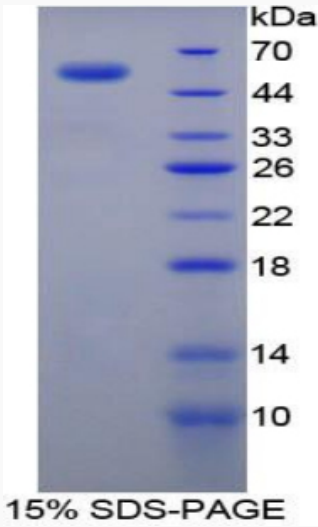
GENE INFORMATION

Gene Name	Tgm1 transglutaminase 1 [<i>Rattus norvegicus</i> (Norway rat)]
Official Symbol	Tgm1
Synonyms	Dhh; desert hedgehog; C78960; desert hedgehog protein; HHG-3
Gene ID	60335
mRNA Refseq	NM_031659.1
Protein Refseq	NP_113847.1
UniProt ID	P23606


 Tel: 1-631-559-9269 1-516-512-3133

 Email: info@creative-biomart.com  Fax: 1-631-938-8127

 45-1 Ramsey Road, Shirley, NY 11967, USA



SDS-PAGE

 Tel: 1-631-559-9269 1-516-512-3133

 Email: info@creative-biomart.com  Fax: 1-631-938-8127

 45-1 Ramsey Road, Shirley, NY 11967, USA