

## Recombinant Mouse Tgm2 Protein (Ala2-Ala686), C-His tagged

Cat. No. Tgm2-6818M Lot. No. (See product label)

### SPECIFICATION

<b>Product Overview</b>	Recombinant mouse TGM2 (Ala2-Ala686) fused with the C-terminal His tag was expressed in mammalian cells.
<b>Species</b>	Mouse
<b>Source</b>	Mammalian Cells
<b>ProteinLength</b>	Ala2-Ala686
<b>Description</b>	Enables protein-glutamine gamma-glutamyltransferase activity. Involved in cellular calcium ion homeostasis; positive regulation of cell adhesion; and regulation of apoptotic cell clearance. Acts upstream of or within branching involved in salivary gland morphogenesis and salivary gland cavitation. Located in collagen-containing extracellular matrix. Is expressed in several structures, including alimentary system; central nervous system; cranium; genitourinary system; and sensory organ. Used to study maturity-onset diabetes of the young. Orthologous to human TGM2 (transglutaminase 2).
<b>Form</b>	Lyophilized powder/frozen liquid
<b>Molecular Mass</b>	75.35 kDa
<b>Purity</b>	> 90 % as determined by SDS-PAGE
<b>Notes</b>	For research use only.

 Tel: 1-631-559-9269 1-516-512-3133

 Email: [info@creative-biomart.com](mailto:info@creative-biomart.com)  Fax: 1-631-938-8127

 45-1 Ramsey Road, Shirley, NY 11967, USA

<b>Storage</b>	Use a manual defrost freezer and avoid repeated freeze thaw cycles. Store at 2 to 8 centigrade for one week. Store at -20 to -80 centigrade for twelve months from the date of receipt.
<b>Storage Buffer</b>	Supplied as solution form in PBS or lyophilized from PBS.
<b>Reconstitution</b>	Reconstitute in sterile water for a stock solution.
<b>Shipping</b>	They are shipped out with dry ice/blue ice unless customers require otherwise.

## GENE INFORMATION

<b>Gene Name</b>	<a href="#">Tgm2 transglutaminase 2, C polypeptide [ Mus musculus (house mouse) ]</a>
<b>Official Symbol</b>	<a href="#">Tgm2</a>
<b>Synonyms</b>	Tgm2; transglutaminase 2, C polypeptide; TG2; tTG; G[a]h; tGase; TGase2; protein-glutamine gamma-glutamyltransferase 2; C polypeptide; TG (C); TGC; TGase C; TGase II; TGase-2; isopeptidase TGM2; protein-glutamine deamidase TGM2; protein-glutamine dopaminyltransferase TGM2; protein-glutamine histaminyltransferase TGM2; protein-glutamine noradrenalinyltransferase TGM2; protein-glutamine serotonyltransferase TGM2; protein-glutamine-gamma-glutamyltransferase; tissue transglutaminase; transglutaminase C; transglutaminase II; transglutaminase-2; EC 2.3.2.13; EC 3.5.1.44
<b>Gene ID</b>	<a href="#">21817</a>
<b>mRNA Refseq</b>	<a href="#">NM_009373</a>
<b>Protein Refseq</b>	<a href="#">NP_033399</a>

 Tel: 1-631-559-9269 1-516-512-3133

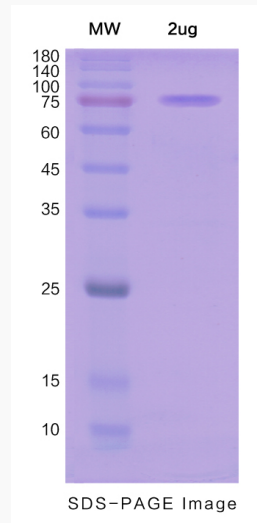
 Email: [info@creative-biomart.com](mailto:info@creative-biomart.com)  Fax: 1-631-938-8127

 45-1 Ramsey Road, Shirley, NY 11967, USA

UniProt ID

P21981

SDS-PAGE



 Tel: 1-631-559-9269 1-516-512-3133

 Email: [info@creative-biomart.com](mailto:info@creative-biomart.com)  Fax: 1-631-938-8127

 45-1 Ramsey Road, Shirley, NY 11967, USA