

Recombinant Rat Thy1 protein, His-tagged

Cat. No. Thy1-6912R **Lot. No.** (See product label)

SPECIFICATION

Product Overview	Recombinant Rat Thy1 aa. (Met1~Leu161) fused with N-terminal His tag was produced in E. coli cells.
Species	Rat
Source	E.coli
ProteinLength	Met1~Leu161
Description	Cell surface glycoprotein antigen.
Form	Freeze-dried powder
Molecular Mass	16kDa as determined by SDS-PAGE reducing conditions.
Endotoxin	<1.0EU per 1ug (determined by the LAL method)
Purity	>95%
Characteristic	The isoelectric point is 9.2.
Applications	Positive Control; Immunogen; SDS-PAGE; WB
Stability	The thermal stability is described by the loss rate. The loss rate was determined by accelerated thermal degradation test, that is, incubate the protein at 37°C for 48h,

 Tel: 1-631-559-9269 1-516-512-3133

 Email: info@creative-biomart.com  Fax: 1-631-938-8127

 45-1 Ramsey Road, Shirley, NY 11967, USA

and no obvious degradation and precipitation were observed. The loss rate is less than 5% within the expiration date under appropriate storage condition.

Storage

Avoid repeated freeze/thaw cycles. Store at 2-8°C for one month. Aliquot and store at -80°C for 12 months.

Concentration

200ug/mL

Storage buffer

20mM Tris, 150mM NaCl, pH8.0, containing 1mM EDTA, 1mM DTT, 0.01% sarcosyl, 5%Trehalose and Proclin300.

Reconstitution

Reconstitute in 20mM Tris, 150mM NaCl (pH8.0) to a concentration of 0.1-1.0 mg/mL. Do not vortex.

GENE INFORMATION

Gene Name

Thy1 Thy-1 cell surface antigen [*Rattus norvegicus* (Norway rat)]

Official Symbol

Thy1

Synonyms

Thy1; Thy-1 cell surface antigen; CD7; thy-1 membrane glycoprotein; CD90; Thy-1 protein; Thymus cell surface antigen; thy-1 antigen; thy-1 glycoprotein; thymus cell antigen 1, theta

Gene ID

24832

mRNA Refseq

NM_012673.2

Protein Refseq

NP_036805.1

UniProt ID

P01830

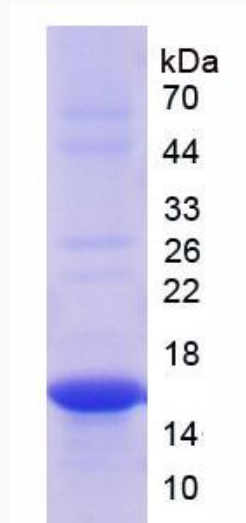
 Tel: 1-631-559-9269 1-516-512-3133

 Email: info@creative-biomart.com  Fax: 1-631-938-8127

 45-1 Ramsey Road, Shirley, NY 11967, USA



SDS-PAGE



Tel: 1-631-559-9269 1-516-512-3133

Email: info@creative-biomart.com Fax: 1-631-938-8127

45-1 Ramsey Road, Shirley, NY 11967, USA