

Recombinant Mouse Tie1 Protein, Fc-tagged

Cat. No. Tie1-7355M Lot. No. (See product label)

SPECIFICATION

Product Overview	Recombinant Murine soluble TIE-1 (Val23-Glu749) protein fused with the Fc part of human IgG1 was expressed in CHO.
Species	Mouse
Source	CHO
Description	Transmembrane tyrosine-protein kinase that may modulate TEK/TIE2 activity and contribute to the regulation of angiogenesis.
Form	Lyophilized
Molecular Mass	260 kDa
AA Sequence	VDLTLLANLRITDPQRFFLTCVSGEAGAGRSSDPPLLEKDDRIVRTFPPGQPLYLAR NGSHQVTLRGFSKPSDLVGVFSCVGGAGARRTRVLYVHNSPGAHLFPDKVTHTVN KGDTAVLSAHVHKEKQTDVIWKNNGSYFNTLDWQEADDGRFQLQLQNVQPPSSGI YSATYLEASPLGSAFFRLIVRGCGAGRWGPGCVKDCPGCLHGGVCHDHDGECVCP PGFTGTRCEQACREGRFGQSCQECPGTAGCRGLTFCLPDPYGCSCGSGWRGS QCQEACAPDHFAGADCRLQCQCQNGGTCDRFSGCVCPSGWHGVHCEKSDRIPQIL SMATEVEFNIGTMPRINCAAAGNPPFVRGSMKLRKPDGTMLLSTKVIVEPDRTTAEF EVPSLTLGDSGFWECEVSTSGGQDSRRFKVNVKVPVPLTAPRLAKQSRQLVVSP LVSFSGDGPISVRLHYRPQDSTIAWSAIVDPSENVTLMLNPKKTGYNVRVQLSRP GEGGEGGWGPSALMTTDCPEPLLQPWLESWHVEGPDRLRVSWSLPSVPLSGDGF LLRLWDGARGQERRENISFPQARTALLTGLTPGTHYQLDVRLYHCTLLGPASPPAH

 Tel: 1-631-559-9269 1-516-512-3133

 Email: info@creative-biomart.com  Fax: 1-631-938-8127

 45-1 Ramsey Road, Shirley, NY 11967, USA



VHLPPSGPPAPRHLHAQALSDSEIQLMWQHPEAPSGPISKYIVEIQVAGGSGDPQW
 MDVDRPEETSIIVRGLNASTRYLFRVRASVQGLGDWSNTVEEATLGNGLQSEDVPR
 ESRAAEGLTRSDKHTCPCPAPELLGGPSVFLFPPKPKDTLMISRTPEVTCVVVD
 VSHEDPEVKFNWYVDGVEVHNAKTKPREEQYNSTYRVVSVLTVLHQDWLNGKEYK
 CKVSNKALPAPIEKTISKAKGQPREPQVYTLPPSREEMTKNQVSLTCLVKGFYPSDIA
 VEWESNGQPENNYKTTTPMLDSGDGSFFLYSKLTVDKSRWQQGNVFCFSVMHEAL
 HNHYTQKSLSLSPGK

Purity > 90 % by SDS-PAGE and visualized by Silver stain

Stability Shelf life: one year from despatch.

Storage Store lyophilized at 2-8 centigrade for 6 months or at -20 centigrade long term.
 After reconstitution store the antibody undiluted at 2-8 centigrade for one month or (in aliquots) at -20 centigrade long term.
 Avoid repeated freezing and thawing.

Storage Buffer PBS without stabilizers

Reconstitution Restore in PBS or medium to a concentration not lower than 50 µg/mL. The lyophilised sTIE-1/Fc is soluble in water and most aqueous buffers.

GENE INFORMATION

Gene Name Tie1 tyrosine kinase with immunoglobulin-like and EGF-like domains 1 [Mus musculus (house mouse)]

Official Symbol Tie1

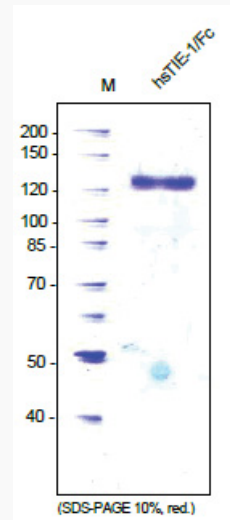
Synonyms Tie1; tyrosine kinase with immunoglobulin-like and EGF-like domains 1; TI; TIE; tie-; tie-1; D430008P04Rik; tyrosine-protein kinase receptor Tie-1; tyrosine kinase

Tel: 1-631-559-9269 1-516-512-3133

Email: info@creative-biomart.com Fax: 1-631-938-8127

45-1 Ramsey Road, Shirley, NY 11967, USA

receptor 1; EC 2.7.10.1

Gene ID 21846**mRNA Refseq** NM_011587**Protein Refseq** NP_035717**UniProt ID** Q06806**SDS-PAGE** Tel: 1-631-559-9269 1-516-512-3133 Email: info@creative-biomart.com  Fax: 1-631-938-8127 45-1 Ramsey Road, Shirley, NY 11967, USA