

Recombinant Mouse Timp1 protein, His-tagged

Cat. No. Timp1-2788M Lot. No. (See product label)

SPECIFICATION

| | |
|-------------------------|---|
| Product Overview | Recombinant Mouse Timp1 aa. (Ala35~Pro160) fused with N-terminal His tag was produced in E. coli cells. |
| Species | Mouse |
| Source | E.coli |
| ProteinLength | Ala35~Pro160 |
| Form | Freeze-dried powder |
| Molecular Mass | 15kDa as determined by SDS-PAGE reducing conditions. |
| Endotoxin | <1.0EU per 1g (determined by the LAL method) |
| Purity | >92% |
| Characteristic | The isoelectric point is 9.4. |
| Applications | Positive Control; Immunogen; SDS-PAGE; WB. |
| Stability | The thermal stability is described by the loss rate. The loss rate was determined by accelerated thermal degradation test, that is, incubate the protein at 37°C for 48h, and no obvious degradation and precipitation were observed. The loss rate is less than 5% within the expiration date under appropriate storage condition. |

 Tel: 1-631-559-9269 1-516-512-3133

 Email: info@creative-biomart.com  Fax: 1-631-938-8127

 45-1 Ramsey Road, Shirley, NY 11967, USA

| | |
|-----------------------|--|
| Storage | Avoid repeated freeze/thaw cycles. Store at 2-8°C for one month. Aliquot and store at -80°C for 12 months. |
| Concentration | 200µg/mL |
| Storage buffer | PBS, pH7.4, containing 1mM DTT, 5% trehalose, 0.01% sarcosyl and Proclin300. |
| Reconstitution | Reconstitute in PBS (pH7.4) to a concentration of 0.1-1.0 mg/mL. Do not vortex. |

GENE INFORMATION

| | |
|------------------------|---|
| Gene Name | Timp1 tissue inhibitor of metalloproteinase 1 [<i>Mus musculus</i> (house mouse)] |
| Official Symbol | Timp1 |
| Synonyms | EPA; Clgi; Timp; TIMP-1; TPA-S1; TPA-induced protein; collagenase inhibitor 16C8 fibroblast; erythroid-potentiating activity; tissue inhibitor of metalloproteinases 1; metalloproteinase inhibitor 1 |
| Gene ID | 21857 |
| mRNA Refseq | NM_001044384.1 |
| Protein Refseq | NP_001037849.1 |
| UniProt ID | P12032 |

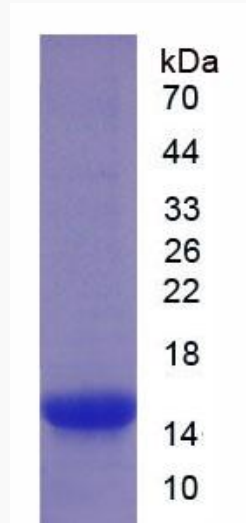
 Tel: 1-631-559-9269 1-516-512-3133

 Email: info@creative-biomart.com  Fax: 1-631-938-8127

 45-1 Ramsey Road, Shirley, NY 11967, USA



SDS-PAGE



Tel: 1-631-559-9269 1-516-512-3133

Email: info@creative-biomart.com Fax: 1-631-938-8127

45-1 Ramsey Road, Shirley, NY 11967, USA