

Recombinant Mouse Timp1 Protein (Cys25-Arg205)

Cat. No. Timp1-6825M **Lot. No.** (See product label)

SPECIFICATION

Product Overview	Recombinant mouse TIMP1 (Cys25-Arg205) without tag was expressed in mammalian cells.
Species	Mouse
Source	Mammalian Cells
ProteinLength	Cys25-Arg205
Description	Predicted to enable several functions, including cytokine activity; metalloendopeptidase inhibitor activity; and zinc ion binding activity. Acts upstream of or within connective tissue replacement involved in inflammatory response wound healing. Located in basement membrane. Is expressed in several structures, including early conceptus; hindlimb cartilage condensation; jaw; reproductive system; and skeletal system. Orthologous to human TIMP1 (TIMP metallopeptidase inhibitor 1).
Form	Lyophilized powder/frozen liquid
Molecular Mass	19.91 kDa
Purity	> 90 % as determined by SDS-PAGE
Notes	For research use only.

 Tel: 1-631-559-9269 1-516-512-3133

 Email: info@creative-biomart.com  Fax: 1-631-938-8127

 45-1 Ramsey Road, Shirley, NY 11967, USA

Storage	Use a manual defrost freezer and avoid repeated freeze thaw cycles. Store at 2 to 8 centigrade for one week. Store at -20 to -80 centigrade for twelve months from the date of receipt.
Storage Buffer	Supplied as solution form in PBS or lyophilized from PBS.
Reconstitution	Reconstitute in sterile water for a stock solution.
Shipping	They are shipped out with dry ice/blue ice unless customers require otherwise.

GENE INFORMATION

Gene Name	Timp1 tissue inhibitor of metalloproteinase 1 [<i>Mus musculus</i> (house mouse)]
Official Symbol	Timp1
Synonyms	Timp1; tissue inhibitor of metalloproteinase 1; EPA; Clgi; Timp; TIMP-1; TPA-S1; metalloproteinase inhibitor 1; TPA-induced protein; collagenase inhibitor 16C8 fibroblast; erythroid-potentiating activity; tissue inhibitor of metalloproteinases 1
Gene ID	21857
mRNA Refseq	NM_001044384
Protein Refseq	NP_001037849
UniProt ID	P12032

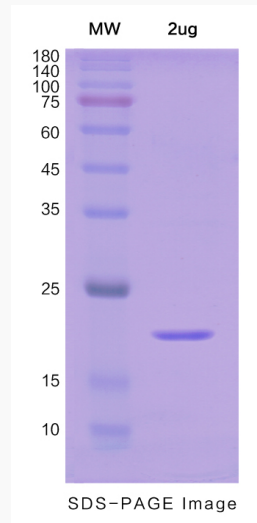
 Tel: 1-631-559-9269 1-516-512-3133

 Email: info@creative-biomart.com  Fax: 1-631-938-8127

 45-1 Ramsey Road, Shirley, NY 11967, USA



SDS-PAGE



Tel: 1-631-559-9269 1-516-512-3133

Email: info@creative-biomart.com Fax: 1-631-938-8127

45-1 Ramsey Road, Shirley, NY 11967, USA