

## Active Recombinant Rat Timp3 protein, His-tagged

**Cat. No.** Timp3-547R    **Lot. No.** (See product label)

### SPECIFICATION

<b>Product Overview</b>	Active Recombinant Rat Timp3 protein(P48032)(27~209 aa), fused with N-terminal His tag, was expressed in E.coli.
<b>Species</b>	Rat
<b>Source</b>	E.coli
<b>ProteinLength</b>	27-209 aa
<b>Form</b>	Lyophilized from sterile 20mM Tris, 150mM NaCl, pH8.0, containing 1mM EDTA, 1mM DTT, 0.01% SKL, 5% Trehalose and Proclin300.
<b>Bio-activity</b>	<p>Tissue Inhibitors Of Metalloproteinase 3 (TIMP3) is a protein belongs to the tissue inhibitor of metalloproteinases family. They are inhibitors of the matrix metalloproteinases. TIMP-3 is the only member of the TIMP family which is found exclusively in the extracellular matrix (ECM). It is regulated in a cell cycle-dependent fashion in certain cell types and may serve as a marker for terminal differentiation. Besides, Matrix Metalloproteinase 2 (MMP2) has been identified as an interactor of TIMP3, thus a binding ELISA assay was conducted to detect the interaction of recombinant rat TIMP3 and recombinant rat MMP2. Briefly, TIMP3 were diluted serially in PBS, with 0.01% BSA (pH 7.4). Duplicate samples of 100μ were then transferred to MMP2-coated microtiter wells and incubated for 2h at 37°C. Wells were washed with PBST and incubated for 1h with anti-TIMP3 pAb, then aspirated and washed 3 times. After incubation with HRP labelled secondary antibody, wells were</p>

 Tel: 1-631-559-9269    1-516-512-3133

 Email: [info@creative-biomart.com](mailto:info@creative-biomart.com)     Fax: 1-631-938-8127

 45-1 Ramsey Road, Shirley, NY 11967, USA



aspirated and washed 3 times. With the addition of substrate solution, wells were incubated 15-25 minutes at 37°C. Finally, add 50µ stop solution to the wells and read at 450nm immediately. The binding activity of TIMP3 and MMP2 was shown, and this effect was in a dose dependent manner.

<b>Molecular Mass</b>	22.4kDa
<b>Endotoxin</b>	<1.0EU per 1µg (determined by the LAL method).
<b>Purity</b>	> 97% as determined by SDS-PAGE.
<b>Storage</b>	Avoid repeated freeze/thaw cycles. Store at -20°C for 12 months. Aliquot and store at -80°C for 12 months.
<b>Reconstitution</b>	Reconstitute in 20mM Tris, 150mM NaCl (pH8.0) to a concentration of 0.1-1.0 mg/mL. Do not vortex.

## GENE INFORMATION

<b>Gene Name</b>	Timp3 TIMP metalloproteinase inhibitor 3 [ Rattus norvegicus ]
<b>Official Symbol</b>	Timp3
<b>Synonyms</b>	TIMP3; TIMP metalloproteinase inhibitor 3; metalloproteinase inhibitor 3; TIMP-3; tissue inhibitor of metalloproteinases 3; tissue inhibitor of metalloproteinase 3 (Sorsby fundus dystrophy, pseudoinflammatory);
<b>Gene ID</b>	25358
<b>mRNA Refseq</b>	NM_012886

Tel: 1-631-559-9269 1-516-512-3133

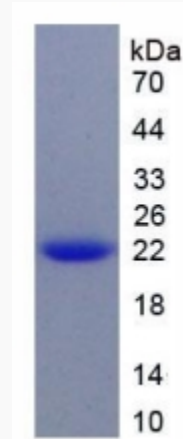
Email: [info@creative-biomart.com](mailto:info@creative-biomart.com) Fax: 1-631-938-8127

45-1 Ramsey Road, Shirley, NY 11967, USA

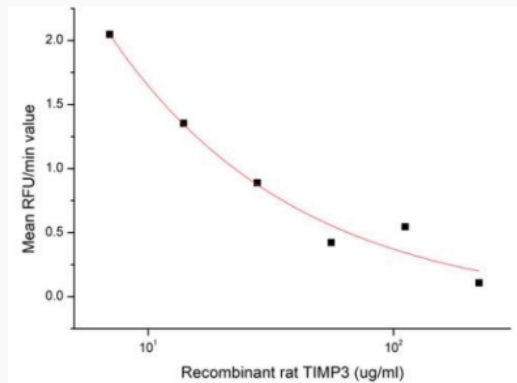
Protein Refseq

NP\_037018

SDS-PAGE



Activity



 Tel: 1-631-559-9269 1-516-512-3133

 Email: [info@creative-biomart.com](mailto:info@creative-biomart.com)  Fax: 1-631-938-8127

 45-1 Ramsey Road, Shirley, NY 11967, USA