

## Recombinant Rat Tmprss2 Protein, His-tagged

Cat. No. Tmprss2-429R Lot. No. (See product label)

### SPECIFICATION

<b>Product Overview</b>	Recombinant Rat Tmprss2 Protein (Lys106-Ser490) with N-His tag was expressed in E. coli.
<b>Species</b>	Rat
<b>Source</b>	E.coli
<b>ProteinLength</b>	Lys106-Ser490
<b>Description</b>	Predicted to enable scavenger receptor activity and serine-type endopeptidase activity. Predicted to be involved in positive regulation of viral entry into host cell and protein autoprocessing. Predicted to be located in nucleoplasm and plasma membrane. Orthologous to human TMPRSS2 (transmembrane serine protease 2).
<b>Form</b>	Freeze-dried powder
<b>Molecular Mass</b>	Predicted Molecular Mass: 46.2 kDa Accurate Molecular Mass: 47 kDa
<b>Purity</b>	> 90%
<b>Applications</b>	Positive Control; Immunogen; SDS-PAGE; WB.
<b>Stability</b>	The thermal stability is described by the loss rate. The loss rate was determined by accelerated thermal degradation test, that is, incubate the protein at 37 centigrade for

 Tel: 1-631-559-9269 1-516-512-3133

 Email: [info@creative-biomart.com](mailto:info@creative-biomart.com)  Fax: 1-631-938-8127

 45-1 Ramsey Road, Shirley, NY 11967, USA

48h, and no obvious degradation and precipitation were observed. The loss rate is less than 5% within the expiration date under appropriate storage condition.

**Storage**

Avoid repeated freeze/thaw cycles. Store at 2-8 centigrade for one month. Aliquot and store at -80 centigrade for 12 months.

**Storage Buffer**

20mM Tris, 150mM NaCl, pH8.0, containing 1mM EDTA, 1mM DTT, 0.01% SKL, 5% Trehalose and Proclin300.

**Reconstitution**

Reconstitute in sterile water to a concentration of 0.1-1.0 mg/mL. Do not vortex.

**GENE INFORMATION****Gene Name**

Tmprss2 transmembrane protease, serine 2 [ *Rattus norvegicus* (Norway rat) ]

**Official Symbol**

Tmprss2

**Synonyms**

TMPRSS2; transmembrane protease, serine 2; transmembrane protease serine 2

**Gene ID**

156435

**mRNA Refseq**

NM\_130424

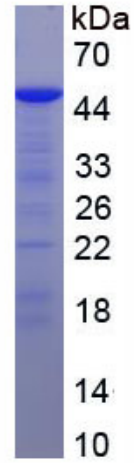
**Protein Refseq**

NP\_569108

 Tel: 1-631-559-9269 1-516-512-3133

 Email: [info@creative-biomart.com](mailto:info@creative-biomart.com)  Fax: 1-631-938-8127

 45-1 Ramsey Road, Shirley, NY 11967, USA



Tel: 1-631-559-9269 1-516-512-3133

Email: [info@creative-biomart.com](mailto:info@creative-biomart.com) Fax: 1-631-938-8127

45-1 Ramsey Road, Shirley, NY 11967, USA