

## Recombinant Mouse Tmprss2 protein, His-tagged

Cat. No. Tmprss2-648M Lot. No. (See product label)

### SPECIFICATION

<b>Product Overview</b>	Recombinant Mouse Tmprss2 protein(Q9JIQ8)(105-490aa), fused with N-terminal His tag, was expressed in Yeast.
<b>Species</b>	Mouse
<b>Source</b>	Yeast
<b>ProteinLength</b>	105-490aa
<b>Form</b>	If the delivery form is liquid, the default storage buffer is Tris/PBS-based buffer, 5%-50% glycerol. If the delivery form is lyophilized powder, the buffer before lyophilization is Tris/PBS-based buffer, 6% Trehalose, pH 8.0.
<b>Molecular Mass</b>	44.7 kDa
<b>Purity</b>	Greater than 90% as determined by SDS-PAGE.
<b>Storage</b>	Store at -20°C/-80°C upon receipt, aliquoting is necessary for mutiple use. Avoid repeated freeze-thaw cycles.
<b>Reconstitution</b>	We recommend that this vial be briefly centrifuged prior to opening to bring the contents to the bottom. Please reconstitute protein in deionized sterile water to a concentration of 0.1-1.0 mg/mL. We recommend to add 5-50% of glycerol (final concentration) and aliquot for long-term storage at -20°C/-80°C.

 Tel: 1-631-559-9269 1-516-512-3133

 Email: [info@creative-biomart.com](mailto:info@creative-biomart.com)  Fax: 1-631-938-8127

 45-1 Ramsey Road, Shirley, NY 11967, USA

**AA Sequence**

WRFWDSNCSTSEMECGSSGTCISSSLWCDGVAHCPNGEDENRCVRLYGQSFILQV  
YSSQRKAWYPVCQDDWSESYGRAACKDMGYKNNFYSSQGIPDQSGATSFMKLNV  
SSGNVDLYKKLYHSDSCSSRMVVSRLRCIECGVRSVKRQSRIVGGLNASPGDWPWQ  
VSLHVQGVHVCGGSIITPEWIVTAAHCVEEPLSSPRYWTAFAGILRQSLMFYGSRHQ  
VEKVISHPNYDSKTKNNDIALMKLQTPLAFNDLVKPVCLPNPGMMLDLQECWISG  
WGATYEKGTSDVLNAAMVPLIEPSKCNISKYIYNNLITPAMICAGFLQGSVDSCQGD  
SGGPLVTLKNGIWWLIGDTSWGS GCAKALRPGVYGNVTVFTDWIYQQMRANS

**GENE INFORMATION**

**Gene Name** [Tmprss2 transmembrane protease, serine 2 \[ Mus musculus \]](#)

**Official Symbol** [Tmprss2](#)

**Synonyms** [TMPRSS2](#); transmembrane protease, serine 2; transmembrane protease serine 2; epitheliasin; plasmic transmembrane protein X; D16Ert61e; MGC6821;

**Gene ID** [50528](#)

**mRNA Refseq** [NM\\_015775](#)

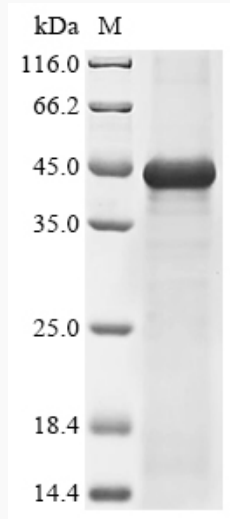
**Protein Refseq** [NP\\_056590](#)

 Tel: 1-631-559-9269 1-516-512-3133

 Email: [info@creative-biomart.com](mailto:info@creative-biomart.com)  Fax: 1-631-938-8127

 45-1 Ramsey Road, Shirley, NY 11967, USA

**SDS-PAGE**



 Tel: 1-631-559-9269 1-516-512-3133

 Email: [info@creative-biomart.com](mailto:info@creative-biomart.com)  Fax: 1-631-938-8127

 45-1 Ramsey Road, Shirley, NY 11967, USA