

Recombinant Mouse Tmprss2 protein, His-tagged

Cat. No. Tmprss2-747M Lot. No. (See product label)

SPECIFICATION

Product Overview	Recombinant Mouse Tmprss2 protein(Q9JIQ8)(105-490aa), fused with C-terminal His tag, was expressed in Yeast.
Species	Mouse
Source	Yeast
ProteinLength	105-490aa
Form	If the delivery form is liquid, the default storage buffer is Tris/PBS-based buffer, 5%-50% glycerol. If the delivery form is lyophilized powder, the buffer before lyophilization is Tris/PBS-based buffer, 6% Trehalose, pH 8.0.
Molecular Mass	44.2 kDa
Purity	Greater than 90% as determined by SDS-PAGE.
Storage	Store at -20°C/-80°C upon receipt, aliquoting is necessary for mutiple use. Avoid repeated freeze-thaw cycles.
Reconstitution	We recommend that this vial be briefly centrifuged prior to opening to bring the contents to the bottom. Please reconstitute protein in deionized sterile water to a concentration of 0.1-1.0 mg/mL. We recommend to add 5-50% of glycerol (final concentration) and aliquot for long-term storage at -20°C/-80°C.

 Tel: 1-631-559-9269 1-516-512-3133

 Email: info@creative-biomart.com  Fax: 1-631-938-8127

 45-1 Ramsey Road, Shirley, NY 11967, USA

AA Sequence

WRFWDSNCSTSEMECGSSGTCISSSLWCDGVAHCPNGEDENRCVRLYGQSFILQV
YSSQRKAWYPVCQDDWSESYGRAACKDMGYKNNFYSSQGIPDQSGATSFMKLNV
SSGNVDLYKKLYHSDSCSSRMVVSRLRCIECGVRSVKRQSRIVGGLNASPGDWPWQ
VSLHVQGVHVCGGSIITPEWIVTAAHCVEEPLSSPRYWTAFAFILRQSLMFYGSRHQ
VEKVISHPNYDSKTKNNDIALMKLQTPLAFNDLVKPVCLPNPGMMLDLQECWISG
WGATYEKGTSDVLNAAMVPLIEPSKCNISKYIYNNLITPAMICAGFLQGSVDSCQGD
SGGPLVTLKNGIWWLIGDTSWGS GCAKALRPGVYGNVTVFTDWIYQQMRANS

GENE INFORMATION

Gene Name [Tmprss2 transmembrane protease, serine 2 \[Mus musculus \]](#)

Official Symbol [Tmprss2](#)

Synonyms [TMPRSS2](#); transmembrane protease, serine 2; transmembrane protease serine 2; epitheliasin; plasmic transmembrane protein X; D16Ert61e; MGC6821;

Gene ID [50528](#)

mRNA Refseq [NM_015775](#)

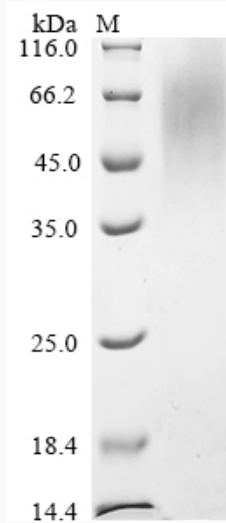
Protein Refseq [NP_056590](#)

 Tel: 1-631-559-9269 1-516-512-3133

 Email: info@creative-biomart.com  Fax: 1-631-938-8127

 45-1 Ramsey Road, Shirley, NY 11967, USA

SDS-PAGE



 Tel: 1-631-559-9269 1-516-512-3133

 Email: info@creative-biomart.com  Fax: 1-631-938-8127

 45-1 Ramsey Road, Shirley, NY 11967, USA