

## Recombinant Mouse Tnfrsf12a protein, hFc-tagged

**Cat. No.** Tnfrsf12a-3533M    **Lot. No.** (See product label)

### SPECIFICATION

<b>Product Overview</b>	Recombinant Mouse Tnfrsf12a protein(Q9CR75)(Glu28-Per80), fused with N-terminal hFc tag, was expressed in HEK293.
<b>Species</b>	Mouse
<b>Source</b>	HEK293
<b>ProteinLength</b>	Glu28-Per80
<b>Tag</b>	N-hFc
<b>Form</b>	Supplied as 0.22µm filtered solution in PBS (pH 7.4).
<b>Bio-activity</b>	Human TNFSF12, hFc Tag immobilized on CM5 Chip can bind Mouse TNFRSF12A, hFc Tag with an affinity constant of 0.15 nM as determined in SPR assay (Biacore T200).
<b>Molecular Mass</b>	The protein has a predicted MW of 32.8 kDa. Due to glycosylation, the protein migrates to 40-50 kDa based on Tris-Bis PAGE result.
<b>Endotoxin</b>	Less than 1EU per µg by the LAL method.
<b>Purity</b>	> 95% as determined by Tris-Bis PAGE
<b>Storage</b>	Valid for 12 months from date of receipt when stored at -80°C. Recommend to aliquot

 Tel: 1-631-559-9269    1-516-512-3133

 Email: [info@creative-biomart.com](mailto:info@creative-biomart.com)     Fax: 1-631-938-8127

 45-1 Ramsey Road, Shirley, NY 11967, USA

the protein into smaller quantities for optimal storage. Please do not repeated freeze-thaw cycles.

**Reconstitution**

It is recommended that sterile water be added to the vial to prepare a stock solution of 0.2 ug/ul. Centrifuge the vial at 4°C before opening to recover the entire contents.

**GENE INFORMATION****Gene Name**

Tnfrsf12a tumor necrosis factor receptor superfamily, member 12a [ *Mus musculus* ]

**Official Symbol**

Tnfrsf12a

**Synonyms**

TNFRSF12A; tumor necrosis factor receptor superfamily, member 12a; tumor necrosis factor receptor superfamily member 12A; tweak-receptor; FGF-inducible 14; type I transmembrane protein Fn14; fibroblast growth factor regulated protein 2; fibroblast growth factor-regulated protein 2; fibroblast growth factor-inducible immediate-early response protein 14; Fn14; HPIP; C87282; TweakR; TWEAK-R; AI255180;

**Gene ID**

27279

**mRNA Refseq**

NM\_001161746

**Protein Refseq**

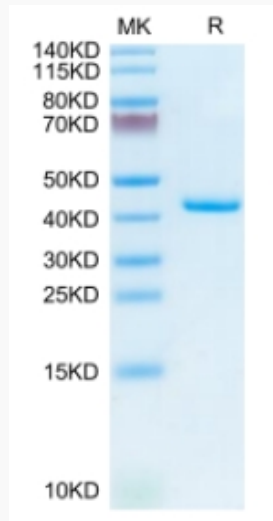
NP\_001155218

 Tel: 1-631-559-9269 1-516-512-3133

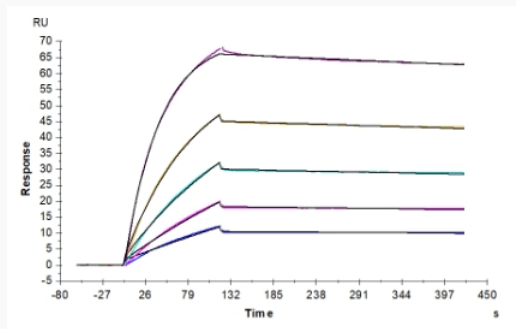
 Email: [info@creative-biomart.com](mailto:info@creative-biomart.com)  Fax: 1-631-938-8127

 45-1 Ramsey Road, Shirley, NY 11967, USA

**Tris-Bis PAGE**



**SPR Data**



 Tel: 1-631-559-9269 1-516-512-3133

 Email: [info@creative-biomart.com](mailto:info@creative-biomart.com)  Fax: 1-631-938-8127

 45-1 Ramsey Road, Shirley, NY 11967, USA