

Active Recombinant Mouse Tnfrsf14 protein, His&hFc-tagged

Cat. No. Tnfrsf14-428M Lot. No. (See product label)

SPECIFICATION

Product Overview	Active Recombinant Mouse Tnfrsf14 protein(Met 1-Gln 206)(NP_849262.1) was expressed in HEK293, fused with C-terminal His-tagged Fc region of human IgG1 at the C-terminus.
Species	Mouse
Source	HEK293
ProteinLength	1-206 aa
Form	Lyophilized from sterile PBS, pH 7.4.
Bio-activity	Measured by its binding ability in a functional ELISA. Immobilized mouse HVEM-Fch at 10 µg/mL (100 µl/well) can bind biotinylated mouse BTLA-Fc. The EC50 of biotinylated mouse BTLA-Fc is 64-96 ng/mL.
Molecular Mass	The recombinant mouse HVEM/Fc is a disulfide-linked homodimeric Protein after removal of the signal peptide. The reduced monomer consists of 415 amino acids and predicts a molecular mass of 46.4 kDa. By SDS-PAGE under reducing conditions, the apparent molecular mass of rmHVEM/Fc monomer is approximately 65 kDa due to the glycosylation.
Endotoxin	< 1.0 EU per µg protein as determined by the LAL method.
Purity	> 90 % as determined by SDS-PAGE

 Tel: 1-631-559-9269 1-516-512-3133

 Email: info@creative-biomart.com  Fax: 1-631-938-8127

 45-1 Ramsey Road, Shirley, NY 11967, USA

Storage Store it under sterile conditions at -20°C to -80°C upon receiving. Recommend to aliquot the protein into smaller quantities for optimal storage. Avoid repeated freeze-thaw cycles.

Reconstitution It is recommended that sterile water be added to the vial to prepare a stock solution of 0.2 ug/ul. Centrifuge the vial at 4°C before opening to recover the entire contents.

GENE INFORMATION

Gene Name [Tnfrsf14 tumor necrosis factor receptor superfamily, member 14 \(herpesvirus entry mediator\) \[Mus musculus \]](#)

Official Symbol [Tnfrsf14](#)

Synonyms TNFRSF14; tumor necrosis factor receptor superfamily, member 14 (herpesvirus entry mediator); tumor necrosis factor receptor superfamily member 14; herpes virus entry mediator; Atar; HveA; Hvem; Tnfrs14; MGC123498; MGC123499;

Gene ID [230979](#)

mRNA Refseq [NM_178931](#)

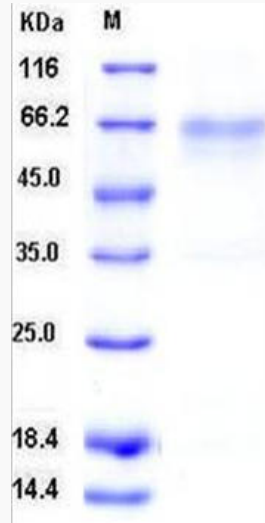
Protein Refseq [NP_849262](#)

 Tel: 1-631-559-9269 1-516-512-3133

 Email: info@creative-biomart.com  Fax: 1-631-938-8127

 45-1 Ramsey Road, Shirley, NY 11967, USA

SDS-PAGE



 Tel: 1-631-559-9269 1-516-512-3133

 Email: info@creative-biomart.com  Fax: 1-631-938-8127

 45-1 Ramsey Road, Shirley, NY 11967, USA