

Active Recombinant Mouse Tnfsf15 protein

Cat. No. Tnfsf15-400M **Lot. No.** (See product label)

SPECIFICATION

Product Overview	Recombinant Mouse Tnfsf15 protein(AAV33431.1)(76-252 aa) was expressed in E.coli.
Species	Mouse
Source	E.coli
ProteinLength	76-252 aa
Form	Lyophilized from a 0.2 µm filtered solution of 20mM PB, 300mM NaCl, pH 7.0.
Bio-activity	Loaded TL1A Antibody-Fc on Protein A Biosensor, can bind Mouse TL1A-None with an affinity constant of 12.8 pM as determined in BLI assay.
Molecular Mass	20 KDa
Endotoxin	< 1 EU/g as determined by LAL test.
Purity	Greater than 95% as determined by reducing SDS-PAGE.
Storage	Lyophilized protein should be stored at ≤ -20°C, stable for one year after receipt. Reconstituted protein solution can be stored at 2-8°C for 2-7 days. Aliquots of reconstituted samples are stable at ≤ -20°C for 3 months.
Reconstitution	Always centrifuge tubes before opening.Do not mix by vortex or pipetting. It is not

 Tel: 1-631-559-9269 1-516-512-3133

 Email: info@creative-biomart.com  Fax: 1-631-938-8127

 45-1 Ramsey Road, Shirley, NY 11967, USA

recommended to reconstitute to a concentration less than 100µg/ml. Dissolve the lyophilized protein in distilled water. Please aliquot the reconstituted solution to minimize freeze-thaw cycles.

GENE INFORMATION

Gene Name [Tnfsf15 tumor necrosis factor \(ligand\) superfamily, member 15 \[Mus musculus \]](#)

Official Symbol [Tnfsf15](#)

Synonyms

TNFSF15; tumor necrosis factor (ligand) superfamily, member 15; tumor necrosis factor ligand superfamily member 15; TNF ligand-related molecule 1; vascular endothelial growth inhibitor; vascular endothelial cell growth inhibitor; bM20K13.3 (tumor necrosis factor (ligand) superfamily, member 15); Tl1; Tl1a; Vegi;

Gene ID [326623](#)

mRNA Refseq [NM_177371](#)

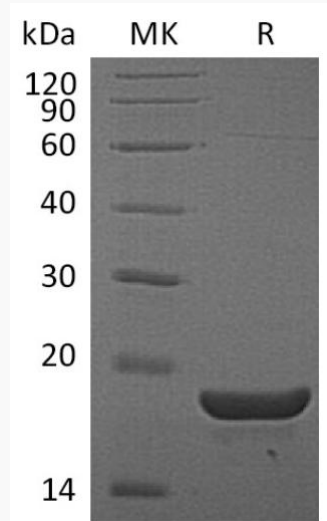
Protein Refseq [NP_796345](#)

 Tel: 1-631-559-9269 1-516-512-3133

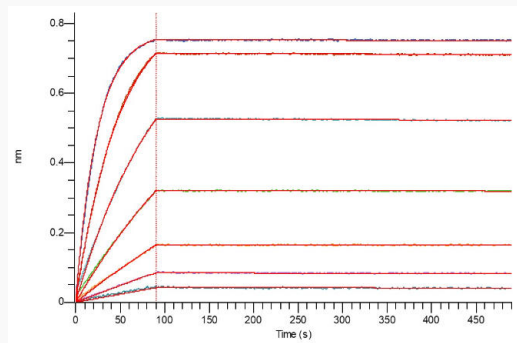
 Email: info@creative-biomart.com  Fax: 1-631-938-8127

 45-1 Ramsey Road, Shirley, NY 11967, USA

SDS-PAGE



ELISA Data



 Tel: 1-631-559-9269 1-516-512-3133

 Email: info@creative-biomart.com  Fax: 1-631-938-8127

 45-1 Ramsey Road, Shirley, NY 11967, USA