

## Recombinant Rat Tnni2 protein

**Cat. No.** Tnni2-643R    **Lot. No.** (See product label)

### SPECIFICATION

<b>Product Overview</b>	Recombinant Rat Tnni2 protein(P27768)(2-182aa) was expressed in E.coli.
<b>Species</b>	Rat
<b>Source</b>	E.coli
<b>ProteinLength</b>	2-182a.a.
<b>Tag</b>	Non
<b>Form</b>	If the delivery form is liquid, the default storage buffer is Tris/PBS-based buffer, 5%-50% glycerol. If the delivery form is lyophilized powder, the buffer before lyophilization is Tris/PBS-based buffer, 6% Trehalose, pH 8.0.
<b>Molecular Mass</b>	21.3 kDa
<b>Purity</b>	Greater than 85% as determined by SDS-PAGE.
<b>Storage</b>	Store at -20°C/-80°C upon receipt, aliquoting is necessary for mutiple use. Avoid repeated freeze-thaw cycles.
<b>Reconstitution</b>	We recommend that this vial be briefly centrifuged prior to opening to bring the contents to the bottom. Please reconstitute protein in deionized sterile water to a concentration of 0.1-1.0 mg/mL.We recommend to add 5-50% of glycerol (final concentration) and aliquot for long-term storage at -20°C/-80°C.

 Tel: 1-631-559-9269    1-516-512-3133

 Email: [info@creative-biomart.com](mailto:info@creative-biomart.com)     Fax: 1-631-938-8127

 45-1 Ramsey Road, Shirley, NY 11967, USA



**AA Sequence**

GDEEKRNRAITARRQHLKSVMLQIAATELEKEESRRESEKQNYLSEHCPPLHIPGSM  
SEVQELCKQLHAKIDAAEEEEKYDMEVKVQKSSKELEDMNQKLFDLRGKFKRPPLRR  
VRMSADAMLKALLGSKHKVCMDLRANLKQVKKEDTEKERDLRDVGDWRKNIEEKS  
GMEGRKKMFESES

**GENE INFORMATION**

**Gene Name** [Tnni2 troponin I type 2 \(skeletal, fast\) \[ Rattus norvegicus \]](#)

**Official Symbol** [Tnni2](#)

**Synonyms** [TNNI2](#); troponin I type 2 (skeletal, fast); troponin I, fast skeletal muscle; troponin 1, type 2; troponin I, skeletal, fast 2; troponin I, fast-twitch isoform;

**Gene ID** [29389](#)

**mRNA Refseq** [NM\\_017185](#)

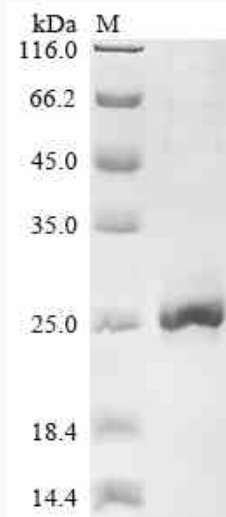
**Protein Refseq** [NP\\_058881](#)

Tel: 1-631-559-9269 1-516-512-3133

Email: [info@creative-biomart.com](mailto:info@creative-biomart.com) Fax: 1-631-938-8127

45-1 Ramsey Road, Shirley, NY 11967, USA

**SDS-PAGE**



 Tel: 1-631-559-9269 1-516-512-3133

 Email: [info@creative-biomart.com](mailto:info@creative-biomart.com)  Fax: 1-631-938-8127

 45-1 Ramsey Road, Shirley, NY 11967, USA