

Recombinant Rat Tnnt1 protein, His-tagged

Cat. No. Tnnt1-7949R **Lot. No.** (See product label)

SPECIFICATION

Product Overview	Recombinant Rat Tnnt1 aa. (Met1~Lys228 (Accession # Q7TNB2)) fused with N-terminal His tag was produced in E. coli cells.
Species	Rat
Source	E.coli
ProteinLength	Met1~Lys228
Description	Human homolog plays a role in the calcium sensitivity of contraction in skeletal muscle.
Form	Freeze-dried powder
Molecular Mass	Predicted Molecular Mass: 28.9kDa
Endotoxin	<1.0EU per 1ug (determined by the LAL method)
Purity	>95%
Characteristic	The isoelectric point is 5.4.
Applications	SDS-PAGE; WB; ELISA; IP
Stability	The thermal stability is described by the loss rate of the target protein. The loss rate

 Tel: 1-631-559-9269 1-516-512-3133

 Email: info@creative-biomart.com  Fax: 1-631-938-8127

 45-1 Ramsey Road, Shirley, NY 11967, USA

was determined by accelerated thermal degradation test, that is, incubate the protein at 37°C for 48h, and no obvious degradation and precipitation were observed. (Referring from China Biological Products Standard, which was calculated by the Arrhenius equation.) The loss of this protein is less than 5% within the expiration date under appropriate storage condition.

Storage	Avoid repeated freeze/thaw cycles. Store at 2-8°C for one month. Aliquot and store at -80°C for 12 months.
Storage Buffer	Supplied as lyophilized form in PBS, pH7.4, containing 5% sucrose, 0.01% sarcosyl.
Reconstitution	Reconstitute in sterile PBS, pH7.2-pH7.4.

GENE INFORMATION

Gene Name	Tnnt1 troponin T1, slow skeletal type [<i>Rattus norvegicus</i> (Norway rat)]
Official Symbol	Tnnt1
Synonyms	Tnnt1; troponin T1, slow skeletal type; sTnT; tnTs; Fang2; troponin T, slow skeletal muscle; slow skeletal muscle troponin T; troponin T type 1 (skeletal, slow); troponin T1, skeletal, slow
Gene ID	171409
mRNA Refseq	NM_001277260.1
Protein Refseq	NP_001264189.1
UniProt ID	Q7TNB2

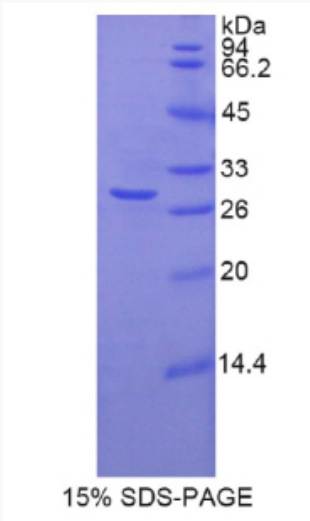
 Tel: 1-631-559-9269 1-516-512-3133

 Email: info@creative-biomart.com  Fax: 1-631-938-8127

 45-1 Ramsey Road, Shirley, NY 11967, USA



SDS-PAGE



Tel: 1-631-559-9269 1-516-512-3133

Email: info@creative-biomart.com Fax: 1-631-938-8127

45-1 Ramsey Road, Shirley, NY 11967, USA