

Recombinant Mouse Top1 Protein, His-tagged

Cat. No. Top1-465M Lot. No. (See product label)

SPECIFICATION

Product Overview	Recombinant Mouse Top1 Protein (Met1-Ser252) with N-His tag was expressed in E. coli.
Species	Mouse
Source	E.coli
ProteinLength	Met1-Ser252
Description	Enables DNA topoisomerase type I (single strand cut, ATP-independent) activity. Acts upstream of or within DNA replication; DNA topological change; and embryonic cleavage. Located in cytoplasm; nucleus; and perikaryon. Is expressed in brain; cerebral cortex ventricular layer; cortical plate; and telencephalon. Orthologous to human TOP1 (DNA topoisomerase I).
Form	Freeze-dried powder
Molecular Mass	Predicted Molecular Mass: 34.1 kDa Accurate Molecular Mass: 34 kDa
Purity	> 97%
Applications	Positive Control; Immunogen; SDS-PAGE; WB.
Stability	The thermal stability is described by the loss rate. The loss rate was determined by

 Tel: 1-631-559-9269 1-516-512-3133

 Email: info@creative-biomart.com  Fax: 1-631-938-8127

 45-1 Ramsey Road, Shirley, NY 11967, USA

accelerated thermal degradation test, that is, incubate the protein at 37 centigrade for 48h, and no obvious degradation and precipitation were observed. The loss rate is less than 5% within the expiration date under appropriate storage condition.

Storage

Avoid repeated freeze/thaw cycles. Store at 2-8 centigrade for one month. Aliquot and store at -80 centigrade for 12 months.

Storage Buffer

20mM Tris, 150mM NaCl, pH8.0, containing 1mM EDTA, 1mM DTT, 0.01% SKL, 5% Trehalose and Proclin300.

Reconstitution

Reconstitute in sterile water to a concentration of 0.1-1.0 mg/mL. Do not vortex.

GENE INFORMATION

Gene Name

Top1 topoisomerase (DNA) I [Mus musculus (house mouse)]

Official Symbol

Top1

Synonyms

TOP1; topoisomerase (DNA) I; DNA topoisomerase 1; DNA topoisomerase I; Top-1; AI467334; D130064I21Rik

Gene ID

21969

mRNA Refseq

NM_009408

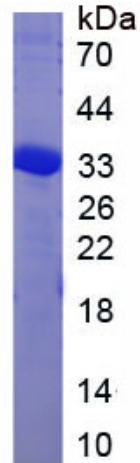
Protein Refseq

NP_033434

 Tel: 1-631-559-9269 1-516-512-3133

 Email: info@creative-biomart.com  Fax: 1-631-938-8127

 45-1 Ramsey Road, Shirley, NY 11967, USA



 Tel: 1-631-559-9269 1-516-512-3133

 Email: info@creative-biomart.com  Fax: 1-631-938-8127

 45-1 Ramsey Road, Shirley, NY 11967, USA