

Recombinant Mouse Tor1aip2 protein, His & T7-tagged

Cat. No. Tor1aip2-1573M **Lot. No.** (See product label)

SPECIFICATION

Product Overview	Recombinant Mouse Tor1aip2 aa. (Tyr250~Leu475 (Accession # Q8BYU6)) fused with N-terminal His & T7 tag was produced in E. coli cells.
Species	Mouse
Source	E.coli
ProteinLength	Tyr250~Leu475
Form	Freeze-dried powder
Molecular Mass	Predicted Molecular Mass: 28.8kDa
Endotoxin	<1.0EU per 1ug (determined by the LAL method)
Purity	>95%
Applications	SDS-PAGE; WB; ELISA; IP.
Stability	The thermal stability is described by the loss rate. The loss rate was determined by accelerated thermal degradation test, that is, incubate the protein at 37°C for 48h, and no obvious degradation and precipitation were observed. The loss rate is less than 5% within the expiration date under appropriate storage condition.
Storage	Avoid repeated freeze/thaw cycles. Store at 2-8°C for one month. Aliquot and store at

 Tel: 1-631-559-9269 1-516-512-3133

 Email: info@creative-biomart.com  Fax: 1-631-938-8127

 45-1 Ramsey Road, Shirley, NY 11967, USA

-80°C for 12 months.

Storage buffer Supplied as lyophilized form in PBS, pH7.4, containing 5% sucrose, 0.01% sarcosyl.

Reconstitution Reconstitute in sterile PBS, pH7.2-pH7.4.

Isoelectric Point 6

GENE INFORMATION

Gene Name [Tor1aip2 torsin A interacting protein 2 \[Mus musculus \(house mouse\) \]](#)

Official Symbol [Tor1aip2](#)

Synonyms Tor1aip2; torsin A interacting protein 2; 15kDa; Lull1; C77739; lfrg15; AA103493; AW060462; AW610675; A130072J07; 1110020D10Rik; torsin-1A-interacting protein 2; interferon alpha responsive protein; 15 kDa interferon-responsive protein; interferon alpha responsive gene, 15 kDa; interferon alpha responsive protein (15 kDa); luminal domain like LAP1

Gene ID [240832](#)

mRNA Refseq [NM_172843.4](#)

Protein Refseq [NP_766431.3](#)

UniProt ID [Q8BYU6](#)

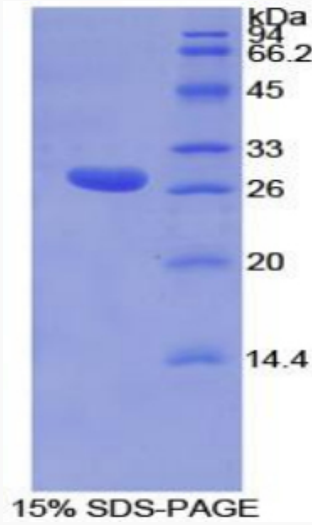
 Tel: 1-631-559-9269 1-516-512-3133

 Email: info@creative-biomart.com  Fax: 1-631-938-8127

 45-1 Ramsey Road, Shirley, NY 11967, USA



SDS-PAGE



Tel: 1-631-559-9269 1-516-512-3133

Email: info@creative-biomart.com Fax: 1-631-938-8127

45-1 Ramsey Road, Shirley, NY 11967, USA