

Recombinant Mouse Tpt1 Protein, His-tagged

Cat. No. Tpt1-615M **Lot. No.** (See product label)

SPECIFICATION

Product Overview	Recombinant Mouse Tpt1(Met1~Cys172) fused with His tag at N-terminal was expressed in E. coli.
Species	Mouse
Source	E.coli
ProteinLength	Met1~Cys172
Form	PBS, pH7.4, containing 0.01% SKL, 1mM DTT, 5% Trehalose and Proclin300.
Molecular Mass	20.66kDa
Endotoxin	<1.0EU per 1g (determined by the LAL method)
Purity	> 90%
Applications	Positive Control; Immunogen; SDS-PAGE; WB. If bio-activity of the protein is needed, please check active protein.
Stability	The thermal stability is described by the loss rate. The loss rate was determined by accelerated thermal degradation test, that is, incubate the protein at 37 centigrade for 48h, and no obvious degradation and precipitation were observed. The loss rate is less than 5% within the expiration date under appropriate storage condition.

 Tel: 1-631-559-9269 1-516-512-3133

 Email: info@creative-biomart.com  Fax: 1-631-938-8127

 45-1 Ramsey Road, Shirley, NY 11967, USA

Storage	Avoid repeated freeze/thaw cycles. Store at 2-8 centigrade for one month. Aliquot and store at -80 centigrade for 12 months.
----------------	--

Reconstitution	Reconstitute in PBS or others.
-----------------------	--------------------------------

GENE INFORMATION

Gene Name	Tpt1 tumor protein, translationally-controlled 1 [Mus musculus]
------------------	---

Official Symbol	Tpt1
------------------------	----------------------

Synonyms	TPT1; tumor protein, translationally-controlled 1; translationally-controlled tumor protein; fortilin; translationally regulated transcript (21 kDa); 21 kDa polypeptide under translational control; Trt; p21; p23; TCTP;
-----------------	--

Gene ID	22070
----------------	-----------------------

mRNA Refseq	NM_009429
--------------------	---------------------------

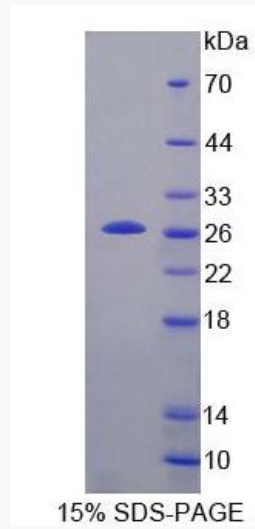
Protein Refseq	NP_033455
-----------------------	---------------------------

UniProt ID	P63028
-------------------	------------------------

 Tel: 1-631-559-9269 1-516-512-3133

 Email: info@creative-biomart.com  Fax: 1-631-938-8127

 45-1 Ramsey Road, Shirley, NY 11967, USA



 Tel: 1-631-559-9269 1-516-512-3133

 Email: info@creative-biomart.com  Fax: 1-631-938-8127

 45-1 Ramsey Road, Shirley, NY 11967, USA