

## Recombinant Mouse Tpt1 Protein, His-tagged

**Cat. No.** Tpt1-7358M    **Lot. No.** (See product label)

### SPECIFICATION

<b>Product Overview</b>	Recombinant mouse Tpt1, fused to His-tag at N-terminus, was expressed in E. coli and purified by using conventional chromatography techniques.
<b>Species</b>	Mouse
<b>Source</b>	E.coli
<b>ProteinLength</b>	1-172
<b>Description</b>	Involved in calcium binding and microtubule stabilization.
<b>Form</b>	Liquid
<b>Molecular Mass</b>	22.1 kDa
<b>AA Sequence</b>	MGSSHHHHHSSGLVPRGSHMGSHMMIYRDLISHDELFSDIYKIREIADGLCLEVEG KMVSRTEGAIDDSLIGGNASAEGPEGEGTESTVVTGVDIVMNHHLQETSFTKEAYKK YIKDYMKSLKGLKLEEQKPERVKPFMTGAAEQIKHILANFNYYQFFIGENMNPDGMVA LLDYREDGVTPFMIFKDGLEMEKC
<b>Purity</b>	> 90 % by SDS-PAGE
<b>Stability</b>	Shelf life: one year from despatch.
<b>Storage</b>	Store undiluted at 2-8 centigrade for one week or (in aliquots) at -20 to -80 centigrade

 Tel: 1-631-559-9269    1-516-512-3133

 Email: [info@creative-biomart.com](mailto:info@creative-biomart.com)     Fax: 1-631-938-8127

 45-1 Ramsey Road, Shirley, NY 11967, USA

for longer. Avoid repeated freezing and thawing.

**Concentration** 1.0 mg/mL (determined by bradford assay)

**Storage Buffer** Phosphate Buffered Saline containing 10 % glycerol, 1 mM DTT.

## GENE INFORMATION

**Gene Name** [Tpt1 tumor protein, translationally-controlled 1 \[ Mus musculus \(house mouse\) \]](#)

**Official Symbol** [Tpt1](#)

**Synonyms** Tpt1; tumor protein, translationally-controlled 1; Tr; fo; TCT; Trt; p21; p23; TCTP; translationally-controlled tumor protein; 21 kDa polypeptide under translational control; fortilin; translationally regulated transcript (21 kDa)

**Gene ID** [22070](#)

**mRNA Refseq** [NM\\_009429](#)

**Protein Refseq** [NP\\_033455](#)

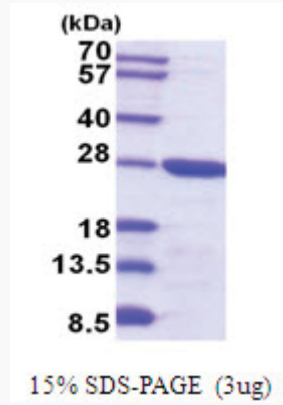
**UniProt ID** [P63028](#)

 Tel: 1-631-559-9269 1-516-512-3133

 Email: [info@creative-biomart.com](mailto:info@creative-biomart.com)  Fax: 1-631-938-8127

 45-1 Ramsey Road, Shirley, NY 11967, USA

SDS-PAGE



 Tel: 1-631-559-9269 1-516-512-3133

 Email: [info@creative-biomart.com](mailto:info@creative-biomart.com)  Fax: 1-631-938-8127

 45-1 Ramsey Road, Shirley, NY 11967, USA