

## Recombinant Mouse Treh Protein, His-tagged

**Cat. No.** Treh-584M    **Lot. No.** (See product label)

### SPECIFICATION

<b>Product Overview</b>	Recombinant Mouse Treh(Ser151~Tyr411) fused with His tag at N-terminal was expressed in E. coli.
<b>Species</b>	Mouse
<b>Source</b>	E.coli
<b>ProteinLength</b>	Ser151~Tyr411
<b>Description</b>	This gene belongs to the alpha-glucosidase family, whose members encode enzymes that carry out hydrolysis of alpha-glucoside bonds of a variety of carbohydrates. The enzyme encoded by this gene uses the disaccharide trehalose as a highly specific substrate and converts it into two glucose molecules. Alternative splicing of this gene results in multiple transcript variants encoding different isoforms.
<b>Form</b>	20mM Tris, 150mM NaCl, pH8.0, containing 1mM EDTA, 1mM DTT, 0.01% SKL, 5% Trehalose and Proclin300.
<b>Molecular Mass</b>	33.5kDa
<b>Endotoxin</b>	<1.0EU per 1g (determined by the LAL method)
<b>Purity</b>	> 92%
<b>Applications</b>	Positive Control; Immunogen; SDS-PAGE; WB.

 Tel: 1-631-559-9269    1-516-512-3133

 Email: [info@creative-biomart.com](mailto:info@creative-biomart.com)     Fax: 1-631-938-8127

 45-1 Ramsey Road, Shirley, NY 11967, USA

If bio-activity of the protein is needed, please check active protein.

**Stability**

The thermal stability is described by the loss rate. The loss rate was determined by accelerated thermal degradation test, that is, incubate the protein at 37 centigrade for 48h, and no obvious degradation and precipitation were observed. The loss rate is less than 5% within the expiration date under appropriate storage condition.

**Storage**

Avoid repeated freeze/thaw cycles. Store at 2-8 centigrade for one month. Aliquot and store at -80 centigrade for 12 months.

**Reconstitution**

Reconstitute in PBS or others.

## GENE INFORMATION

**Gene Name**

Treh trehalase (brush-border membrane glycoprotein) [ *Mus musculus* ]

**Official Symbol**

Treh

**Synonyms**

Treh; alpha,alpha-trehalase; alpha,alpha-trehalose glucohydrolase

**Gene ID**

58866

**mRNA Refseq**

NM\_001277847

**Protein Refseq**

NP\_001264776

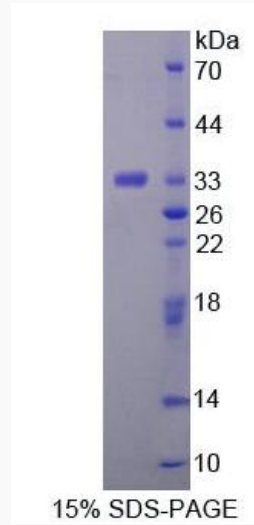
**UniProt ID**

Q9JLT2

 Tel: 1-631-559-9269 1-516-512-3133

 Email: [info@creative-biomart.com](mailto:info@creative-biomart.com)  Fax: 1-631-938-8127

 45-1 Ramsey Road, Shirley, NY 11967, USA



Tel: 1-631-559-9269 1-516-512-3133

Email: [info@creative-biomart.com](mailto:info@creative-biomart.com) Fax: 1-631-938-8127

45-1 Ramsey Road, Shirley, NY 11967, USA