

## Active Recombinant Mouse Trex1 protein, His&Myc-tagged

Cat. No. Trex1-4639M Lot. No. (See product label)

### SPECIFICATION

<b>Product Overview</b>	Active Recombinant Mouse Trex1 protein(Q91XB0)(1-314aa), fused with N-terminal His tag and C-terminal Myc tag, was expressed in E. coli.
<b>Species</b>	Mouse
<b>Source</b>	E.coli
<b>ProteinLength</b>	1-314aa
<b>Tag</b>	N-His&C-Myc
<b>Form</b>	Tris-based buffer, 50% glycerol.
<b>Bio-activity</b>	TREX1 exonuclease activity liberates free fluorophore from DNA containing a 5'-fluorophore and a 3'-quencher to generate a fluorescent signal. Compound-mediated inhibition of TREX1 activity would be anticipated to reduce fluorescent signal. All reactions were conducted in 20 uL total volumes in 384-well F-bottom polystyrene microplates at 25 °C. Assay buffer consisted of: 25 mM HEPES (pH 7.5), 20 mM KCl, 1 mM DTT, 0.1 mg/mL BSA, 0.01% Triton X-100, 0.25 mM EDTA and 10 mM MgCl <sub>2</sub> . Reactions were initiated upon the addition dsDNA (oligo 1: /5TEX615/GCTAGGCAG and oligo 2: CTGCCTAGC/3IAbRQSp/ stocks in DNA duplex buffer at a final concentration of 230nM. Fluorescence was measured every two minutes for 60 minutes at 615 nm emission and 570 nm excitation at 25 °C using a NEO plate reader.

 Tel: 1-631-559-9269 1-516-512-3133

 Email: [info@creative-biomart.com](mailto:info@creative-biomart.com)  Fax: 1-631-938-8127

 45-1 Ramsey Road, Shirley, NY 11967, USA

<b>Molecular Mass</b>	41.1 kDa
<b>Purity</b>	Greater than 85% as determined by SDS-PAGE.
<b>Storage</b>	Store at -20°C/-80°C upon receipt, aliquoting is necessary for mutiple use. Avoid repeated freeze-thaw cycles.
<b>Reconstitution</b>	It is recommended that sterile water be added to the vial to prepare a stock solution of 0.2 ug/ul. Centrifuge the vial at 4°C before opening to recover the entire contents.
<b>AA Sequence</b>	<p>MGSQTLPHGHMQTLIFLDLEATGLPSSRPEVTELCLLAVHRRALENTSISQGHPPP  PRPPRVVDKLSLCIAPGKACSPGASEITGLSKAELEVQGRQRFDDNLAILLRAFLQRQ  PQPCCLVAHNGDRYDFPLLQTELARLSTPSPLDGTFCVDSIAALKALEQASSPSGNG  SRKSYSLGSIYTRLYWQAPTDSHTAEGDVLTLSSICQWKPQALLQWVDEHARPFST  VKPMYGTTPATTGTTNLRPHAATATTPLATANGSPSNGRSRRPKSPPEKVPPEPSQ  EGLLAPLSLLTLLTLAIATLYGLFLASPGQ</p>

## GENE INFORMATION

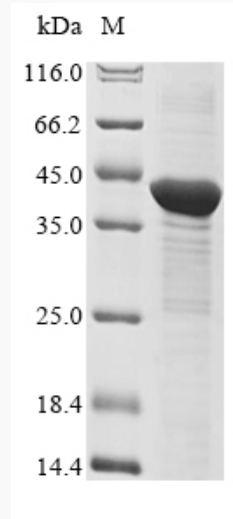
<b>Gene Name</b>	<a href="#">Trex1 three prime repair exonuclease 1 [ Mus musculus ]</a>
<b>Official Symbol</b>	<a href="#">Trex1</a>
<b>Synonyms</b>	TREX1; three prime repair exonuclease 1; DNase III; 3-5 exonuclease TREX1; trophoblast expressed 1; three prime exonuclease 1; 1661; AU041952;
<b>Gene ID</b>	<a href="#">22040</a>
<b>mRNA Refseq</b>	<a href="#">NM_001012236</a>
<b>Protein Refseq</b>	<a href="#">NP_001012236</a>

 Tel: 1-631-559-9269 1-516-512-3133

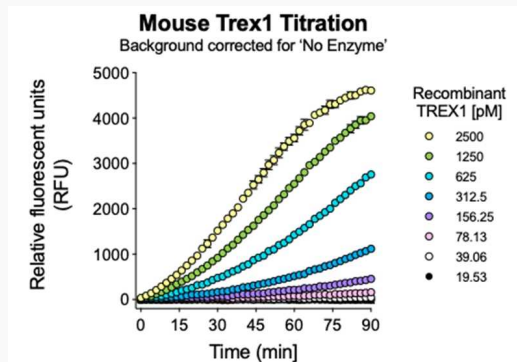
 Email: [info@creative-biomart.com](mailto:info@creative-biomart.com)  Fax: 1-631-938-8127

 45-1 Ramsey Road, Shirley, NY 11967, USA

**SDS-PAGE**



**Activity**



Tel: 1-631-559-9269 1-516-512-3133

Email: [info@creative-biomart.com](mailto:info@creative-biomart.com) Fax: 1-631-938-8127

45-1 Ramsey Road, Shirley, NY 11967, USA