

## Recombinant Mouse Trim21 protein, His-tagged

Cat. No. Trim21-7432M Lot. No. (See product label)

### SPECIFICATION

|                         |   |
|-------------------------|---|
| <b>Product Overview</b> | Recombinant Mouse Trim21 protein(Q62191)(1-470aa), fused with N-terminal His tag, was expressed in Insect cells.  |
| <b>Species</b>          | Mouse   |
| <b>Source</b>           | Insect cells  |
| <b>ProteinLength</b>    | 1-470aa   |
| <b>Tag</b>              | N-His   |
| <b>Form</b>             | If the delivery form is liquid, the default storage buffer is Tris/PBS-based buffer, 5%-50% glycerol. If the delivery form is lyophilized powder, the buffer before lyophilization is Tris/PBS-based buffer, 6% Trehalose, pH 8.0.                |
| <b>Molecular Mass</b>   | 56.7 kDa  |
| <b>Purity</b>           | Greater than 85% as determined by SDS-PAGE.   |
| <b>Storage</b>          | Store at -20°C/-80°C upon receipt, aliquoting is necessary for mutiple use. Avoid repeated freeze-thaw cycles.  |
| <b>Reconstitution</b>   | We recommend that this vial be briefly centrifuged prior to opening to bring the contents to the bottom. Please reconstitute protein in deionized sterile water to a concentration of 0.1-1.0 mg/mL. We recommend to add 5-50% of glycerol (final |

 Tel: 1-631-559-9269 1-516-512-3133

 Email: [info@creative-biomart.com](mailto:info@creative-biomart.com)  Fax: 1-631-938-8127

 45-1 Ramsey Road, Shirley, NY 11967, USA

concentration) and aliquot for long-term storage at -20°C/-80°C.

**AA Sequence**

MSPSTTSKMSLEKMWEEVTCSICLDPMVEPMSIECGHCFCKECEFVVGKNGGSSCP  
 ECRQQFLLRNLRPNRHIANMVENLKQIAQNTKKSTQETHCMKHGEKLLHLFCEEDGQ  
 ALCWVCAQSGKHRDHTRVPIEEAAKVYQEKIHVVLEKLRKKGKELAEKMEMDLTMQR  
 TDWKRNI DTQKSRIHAEFALQNSLLAQEEQRQLQRLEKQREYLRLLGKKEAELAEK  
 NQALQELISELERRIRGSELELLQEVRIILERSGSWNLDTL DIDAPDLTSTCPV PGRKK  
 MLRTCWVHITLDRNTANSWLIISKDRRQVRMGDTHQNVSDNKERFSNYPMVLGAQ  
 RFSSGKMYWEVDVTQKEAWDLGVCRDSVQRKGGQFSLSPENGFWTIWLWQDSYEA  
 GTSPQTTLHIQVPPCQIGIFVDYEAGVVSFYNITDHGSLIYTFSECVFAGPLRPFVNG  
 FNYSGGNAAPLKL CPLKM

## GENE INFORMATION

**Gene Name** [Trim21 tripartite motif-containing 21 \[ Mus musculus \]](#)

**Official Symbol** [Trim21](#)

**Synonyms**

TRIM21; tripartite motif-containing 21; E3 ubiquitin-protein ligase TRIM21; SS-A; ro(SS-A); 52 kDa Ro protein; 52kD Ro/SSA autoantigen; Sjogren syndrome antigen A1; tripartite motif protein 21; sjogren syndrome type A antigen; tripartite motif-containing protein 21; 52 kDa ribonucleoprotein autoantigen Ro/SS-A; Ro52; Ssa1;

**Gene ID** [20821](#)

**mRNA Refseq** [NM\\_001082552](#)

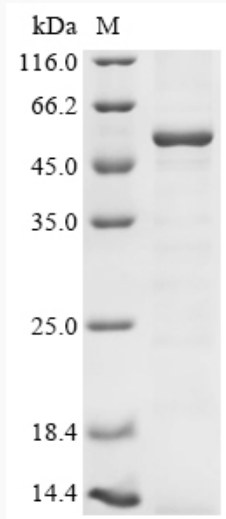
**Protein Refseq** [NP\\_001076021](#)

 Tel: 1-631-559-9269 1-516-512-3133

 Email: [info@creative-biomart.com](mailto:info@creative-biomart.com)  Fax: 1-631-938-8127

 45-1 Ramsey Road, Shirley, NY 11967, USA

**SDS-PAGE**



 Tel: 1-631-559-9269 1-516-512-3133

 Email: [info@creative-biomart.com](mailto:info@creative-biomart.com)  Fax: 1-631-938-8127

 45-1 Ramsey Road, Shirley, NY 11967, USA