

Recombinant Mouse Trim28 protein, His & T7-tagged

Cat. No. Trim28-1697M Lot. No. (See product label)

SPECIFICATION

Product Overview	Recombinant Mouse Trim28 aa. (Pro504~Ala820 (Accession # Q62318)) fused with N-terminal His & T7 tag was produced in E. coli cells.
Species	Mouse
Source	E.coli
ProteinLength	Pro504~Ala820
Form	Freeze-dried powder
Molecular Mass	42kDa as determined by SDS-PAGE reducing conditions.
Endotoxin	<1.0EU per 1ug (determined by the LAL method)
Purity	>95%
Applications	SDS-PAGE; WB; ELISA; IP.
Stability	The thermal stability is described by the loss rate. The loss rate was determined by accelerated thermal degradation test, that is, incubate the protein at 37°C for 48h, and no obvious degradation and precipitation were observed. The loss rate is less than 5% within the expiration date under appropriate storage condition.
Storage	Avoid repeated freeze/thaw cycles. Store at 2-8°C for one month. Aliquot and store at

 Tel: 1-631-559-9269 1-516-512-3133

 Email: info@creative-biomart.com  Fax: 1-631-938-8127

 45-1 Ramsey Road, Shirley, NY 11967, USA

-80°C for 12 months.

Storage buffer

Supplied as lyophilized form in 20mM Tris, 150mM NaCl, pH8.0, containing 1mM EDTA, 1mM DTT, 0.01% sarcosyl, 5% trehalose, and preservative.

Reconstitution

Reconstitute in sterile ddH₂O.

Isoelectric Point

4.6

GENE INFORMATION

Gene Name

Trim28 tripartite motif-containing 28 [*Mus musculus* (house mouse)]

Official Symbol

Trim28

Synonyms

Trim28; tripartite motif-containing 28; KAP-1; Tif1b; KRIP-1; MommeD9; AA408787; Tif1beta; transcription intermediary factor 1-beta; E3 SUMO-protein ligase TRIM28; KRAB-A-interacting protein; RING-type E3 ubiquitin transferase TIF1-beta; TIF1-beta; transcriptional intermediary factor 1, beta; tripartite motif protein 28; tripartite motif-containing protein 28

Gene ID

21849

mRNA Refseq

NM_011588.3

Protein Refseq

NP_035718.2

UniProt ID

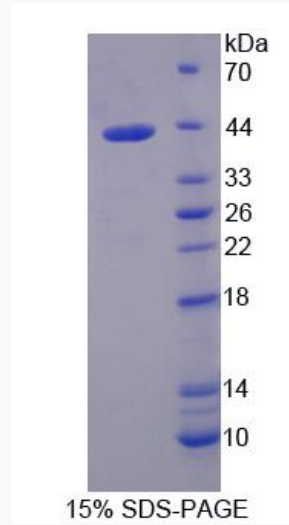
Q62318

 Tel: 1-631-559-9269 1-516-512-3133

 Email: info@creative-biomart.com  Fax: 1-631-938-8127

 45-1 Ramsey Road, Shirley, NY 11967, USA

SDS-PAGE



 Tel: 1-631-559-9269 1-516-512-3133

 Email: info@creative-biomart.com  Fax: 1-631-938-8127

 45-1 Ramsey Road, Shirley, NY 11967, USA