

Recombinant Rat Tshb Protein, His-tagged

Cat. No. Tshb-496R Lot. No. (See product label)

SPECIFICATION

Product Overview	Recombinant Rat Tshb Protein (Phe21-Tyr132) with N-His tag was expressed in E. coli.
Species	Rat
Source	E.coli
ProteinLength	Phe21-Tyr132
Description	Predicted to enable hormone activity. Involved in response to calcium ion; response to estrogen; and response to vitamin A. Predicted to be active in cytoplasm and extracellular space. Human ortholog(s) of this gene implicated in congenital nongoitrous hypothyroidism 4 and hypothyroidism. Orthologous to human TSHB (thyroid stimulating hormone subunit beta).
Form	Freeze-dried powder
Molecular Mass	Predicted Molecular Mass: 16.6 kDa Accurate Molecular Mass: 17 kDa
Purity	> 90%
Applications	Positive Control; Immunogen; SDS-PAGE; WB.
Stability	The thermal stability is described by the loss rate. The loss rate was determined by

 Tel: 1-631-559-9269 1-516-512-3133

 Email: info@creative-biomart.com  Fax: 1-631-938-8127

 45-1 Ramsey Road, Shirley, NY 11967, USA

accelerated thermal degradation test, that is, incubate the protein at 37 centigrade for 48h, and no obvious degradation and precipitation were observed. The loss rate is less than 5% within the expiration date under appropriate storage condition.

Storage

Avoid repeated freeze/thaw cycles. Store at 2-8 centigrade for one month. Aliquot and store at -80 centigrade for 12 months.

Storage Buffer

20mM Tris, 150mM NaCl, pH8.0, containing 1mM EDTA, 1mM DTT, 0.01% SKL, 5% Trehalose and Proclin300.

Reconstitution

Reconstitute in sterile water to a concentration of 0.1-1.0 mg/mL. Do not vortex.

GENE INFORMATION

Gene Name

Tshb thyroid stimulating hormone, beta [*Rattus norvegicus* (Norway rat)]

Official Symbol

Tshb

Synonyms

TSHB; thyroid stimulating hormone, beta; thyrotropin subunit beta; TSH-B; TSH-beta; thyrotropin beta chain; thyroid-stimulating hormone subunit beta; thyroid stimulating hormone, beta subunit

Gene ID

25653

mRNA Refseq

NM_013116

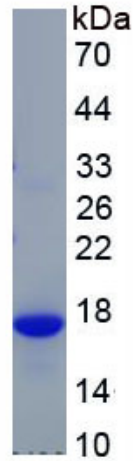
Protein Refseq

NP_037248

 Tel: 1-631-559-9269 1-516-512-3133

 Email: info@creative-biomart.com  Fax: 1-631-938-8127

 45-1 Ramsey Road, Shirley, NY 11967, USA



Tel: 1-631-559-9269 1-516-512-3133

Email: info@creative-biomart.com Fax: 1-631-938-8127

45-1 Ramsey Road, Shirley, NY 11967, USA